

12th December 2019

Press Release

Maharashtra Assembly Elections 2019
Analysis of Vote Share and Margin of Victory of MLAs

Association for Democratic Reforms

T-95, C.L. House, 2nd Floor,
Near Gulmohar Commercial Complex
Gautam Nagar,
New Delhi-110 049
Phone: +91-011-4165-4200
Fax : +91-11-46094248
Email : adr@adrindia.org

To report any electoral violations and malpractices during elections download the Election Watch Reporter (Android App)

https://play.google.com/store/apps/details?id=com.webrosoft.election_watch_reporter

Contents

Summary and Highlights	3
Vote Share of MLAs	5
Margin of Victory for MLAs	9
Performance of Women MLAs in Maharashtra Assembly Elections, 2019	15
Performance of Re-elected MLAs in Maharashtra Assembly Elections, 2019	16
Details of NOTA	17
Vote Share and Margin of Victory of MLAs in Maharashtra Assembly Elections	18

Summary and Highlights

ADR and Maharashtra Election Watch (MEW) have analysed the vote share for the 288 constituencies in the Maharashtra Assembly Elections, 2019.

Vote Share of MLAs

- The MLAs of the Maharashtra Assembly Elections, 2019 won by an average of **49 %** of total votes polled. In the 2014 elections MLAs won by an average of **41.2%** % of total votes polled.
- **128(44%)** MLAs won with 50% and above of the total votes polled in their constituency.
- **160(56%)** MLAs won with less than 50% of the total votes polled in their constituency.
- **70(40%)** out of 176 MLAs analysed with declared criminal cases have won with a vote share of **50% and above**.
- **116(44%)** out of 264 crorepati MLAs analysed have won with a vote share of **50% and above**.

Margin of Victory

- 5 MLAs have won with margin of victory of less than 1000 votes.
- 9 MLAs have won with more than 50% of margin of victory.

MLAs with Declared Criminal Cases and their Margin of Victory:

1. **58** out of 176 MLAs with declared criminal cases have won against a runner up with a clean background.
2. Among these 58 MLAs, 12 MLAs have won with more than 20% margin of victory.
3. Among these, Awhad Jitendra Satish (NCP) from Mumbra- Kalwa constituency won with 42.24 % margin of victory.
4. There are 50 MLAs with a clean background who have won against a runner up with declared criminal cases. Out of these 50 MLAs, 4 have won with more than 40 % margin of victory.

Crorepati MLAs and their Margin of Victory:

1. 19 out of 264 crorepati MLAs have won against a non-crorepati runners up.
2. Among these 19 MLAs, 4 MLAs have won with more than 40 % margin of victory.
3. Among these, Eknath Sambhaji Shinde(SHS) from Kopri pachpakhadi constituency won with 51.42% margin of victory.
4. There are 16 non-crorepati MLAs who have won against crorepati runners up. 4 of them have won with more than 20% margin of victory.

Performance of Women MLAs

- Among the 288 MLAs, 24 women have been analysed.

- All of them won with more than 30% of vote share in their constituencies.

Among the women MLAs, Manisha Ashok Chaudhary (BJP) from Dhaisar Constituency has won with the highest vote share, i.e. 64.87 % in her constituency and 47.33% of margin of victory

Performance of Re-elected MLAs

- Out of total 118 re-elected MLAs **60** have won with more than 50% of vote share.
- **40** re-elected MLAs have won with less than 10% of margin of victory whereas 23 have won with more than 30% of margin of victory.

NOTA

- The NOTA button instated by the ECI in 2013 gave the voters an options of rejecting all the candidates in their constituency. Out of 5,51,49,929 votes polled in Maharashtra Assembly, 2019, **7,42,134 (1.35%)** were polled for NOTA. Out of 5,29,01,236 votes polled in Maharashtra Assembly, 2014, **4,83,459 (0.91%)** were polled for NOTA.

Vote Share of MLAs

The percentage of vote share was calculated by dividing the votes polled for the MLA by the total number of valid votes polled. The value of vote share represents votes won by the winning candidates among the total number of valid votes polled.

$$\text{Votes Share} = \frac{\text{Total Votes Polled for MLA}}{\text{Total No. of Valid Votes Polled}}$$

The MLAs of the Maharashtra Assembly Elections, 2019 won by an average of **49 %** of total votes polled. In the 2014 elections MLAs won by an average of **41.2% %** of total votes polled.

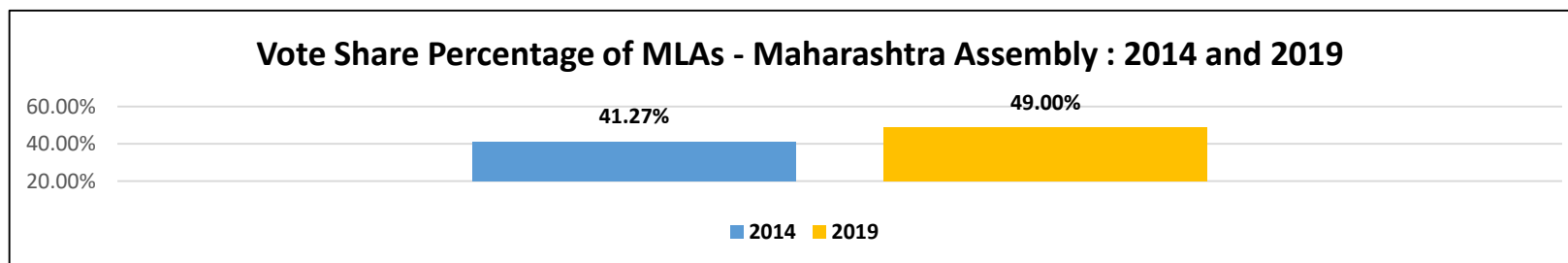


Figure: Vote Share Percentage of MLAs- Maharashtra: 2014 and 2019

Number of MLAs and their vote Share

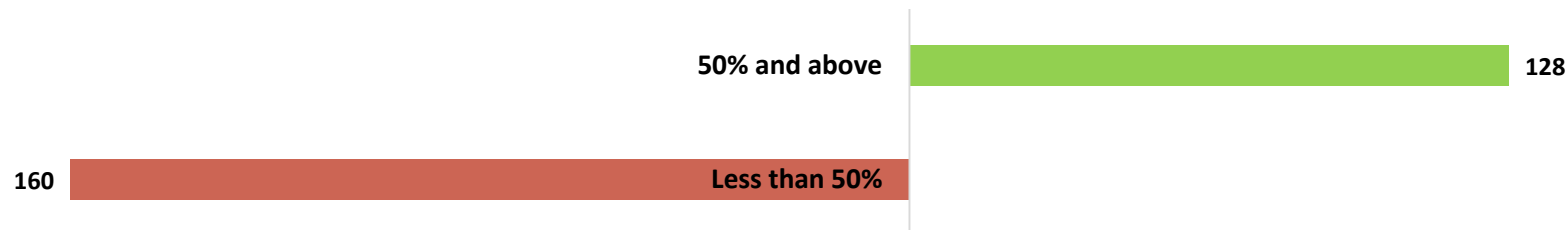


Figure: No. of MLAs- Vote Share

MLAs with highest vote share: 128(44%) MLAs won with 50% and above of the total votes polled in their constituency. The top 3 MLAs who have attained the highest vote share during the Maharashtra Assembly Elections, 2019 are given below:

S.No.	MLA	Party	Constituency	Total Votes Polled	Total Votes polled for Winner	% of Vote Share
1	Ajit Anantrao Pawar	Nationalist Congress Party	Baramati	235040	195641	83.24%
2	Kadam Vishwajeet Patangrao	Indian National Congress	Palus-Kadegaon	206517	171497	83.04%
3	Mangal Prabhat Lodha	Bharatiya Janata Party	Malabar hill	123289	93538	75.87%

Table: MLAs with the highest vote share

MLAs with Least Vote Share: 160(56%) MLAs won with less than 50% of the total votes polled in their constituency. The top 3 MLAs who have attained the least vote share during the Maharashtra Assembly Elections, 2019 are given below:

S.No.	MLA	Party	Constituency	Total Votes Polled	Total Votes polled for Winner	% of Vote Share
1	Rajesh Narasingrao Patil	Nationalist Congress Party	Chandgad	220547	55558	25.19%
2	Mohanrao Marotrao Hambarde	Indian National Congress	Nanded South	182816	46943	25.68%
3	Prakash Gunwantrao Bharsakale	Bharatiya Janata Party	Akot	182915	48586	26.56%

Table: MLAs with least vote share

Party Wise Vote Share

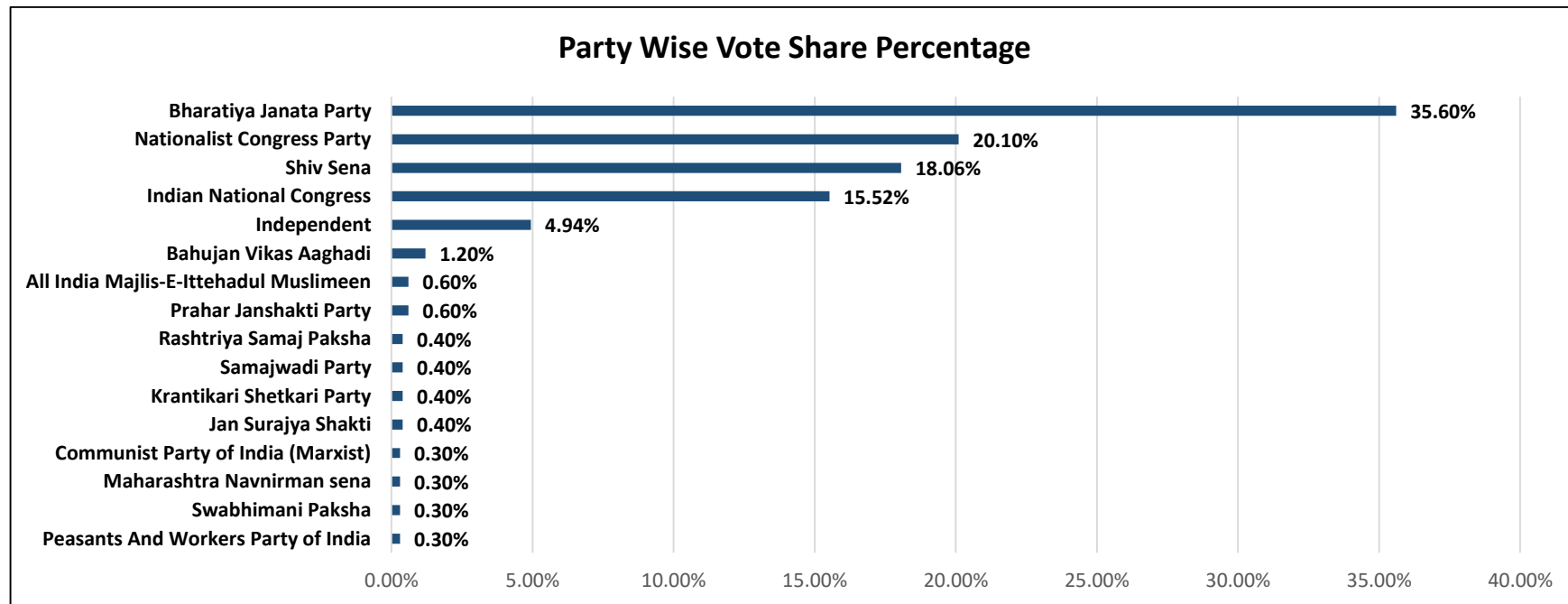


Figure: Party Wise Vote Share Percentage

Party	Number of MLA	Vote Share Percentage
Bharatiya Janata Party	105	35.6%
Nationalist Congress Party	54	20.1%
Shiv Sena	56	18.06%
Indian National Congress	44	15.52%
Independent	13	4.94%
Bahujan Vikas Aaghadi	3	1.2%
Prahar Janshakti Party	2	0.6%

Party	Number of MLA	Vote Share Percentage
All India Majlis-E-Ittehadul Muslimeen	2	0.6%
Jan Surajya Shakti	1	0.4%
Krantikari Shetkari Party	1	0.4%
Samajwadi Party	2	0.4%
Peasants And Workers Party of India	1	0.3%
Swabhimani Paksha	1	0.3%
Maharashtra Navnirman sena	1	0.3%
Rashtriya Samaj Paksha	1	0.4%
Communist Party of India (Marxist)	1	0.3%
Total	288	-

Table: Party wise Vote Share of MLAs

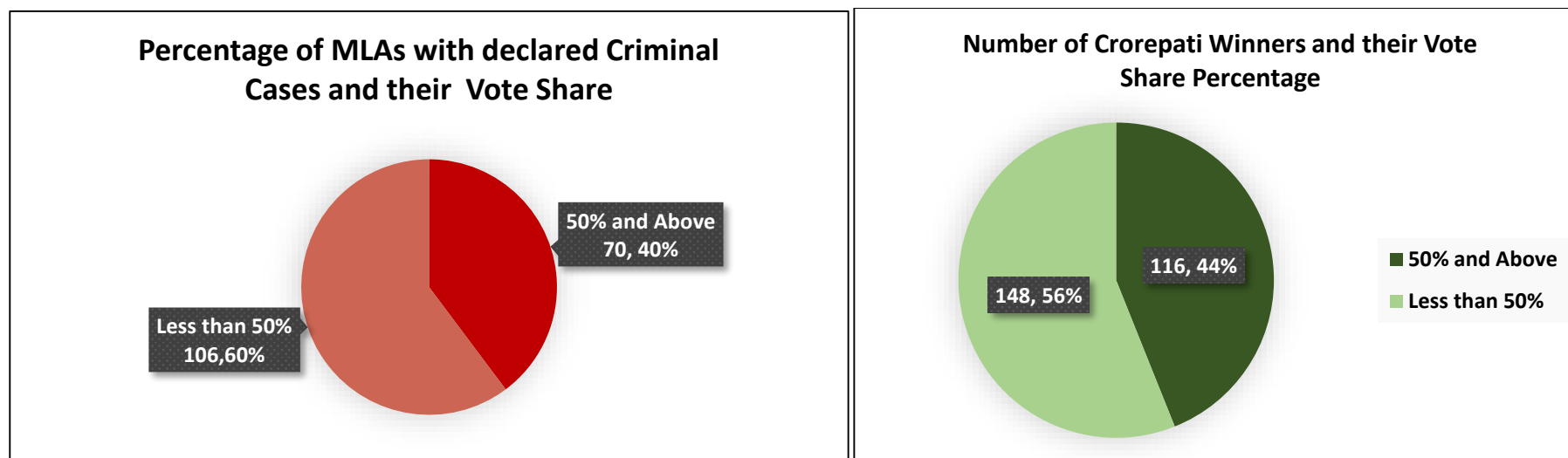


Figure: Vote Share of MLAs with declared criminal cases and Crorepati MLAs

MLAs with Declared Criminal Cases and their Vote Share: 70(40%) out of 176 MLAs analysed with declared criminal cases have won with a vote share of 50% and above.

Crorepati MLAs and their Vote Share: 116(44%) out of 264 crorepati MLAs analysed have won with a vote share of **50% and above**.

Margin of Victory for MLAs

Margin of Victory = Vote Polled for Winners – Votes Polled for the Runner Up

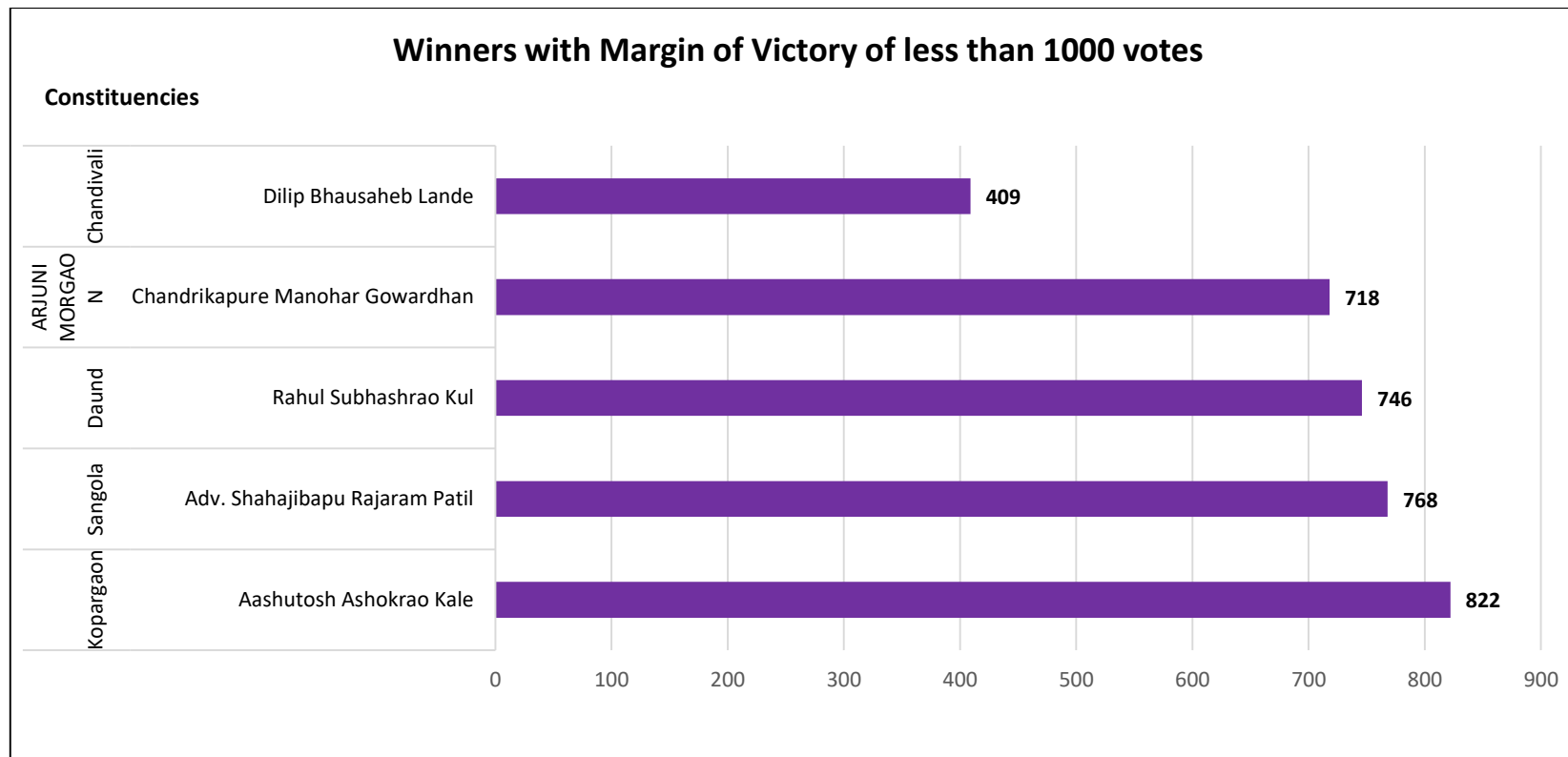


Figure: MLAs with Margin of Victory less than 1000 votes

MLAs with Margin of Victory less than 1000 votes: The details of MLAs with Margin of Victory less than 1000 votes are given below:

S.No.	Constituency	Total Votes Polled in constituency	MLA	Party	Votes polled for Winner	% of Vote share for Winner	Runners up	Party	Votes Polled for Runners up	% of Votes Polled for Runners up	Margin of Victory	% of Margin of Victory
1	Chandivali	196341	Dilip Bhausahab Lande	Shiv Sena	85879	43.74%	Khan Mohd.Arif (Naseem)	Indian National Congress	85470	43.53%	409	0.21%

S.No.	Constituency	Total Votes Polled in constituency	MLA	Party	Votes polled for Winner	% of Vote share for Winner	Runners up	Party	Votes Polled for Runners up	% of Votes Polled for Runners up	Margin of Victory	% of Margin of Victory
2	ARJUNI MORGAON	176274	Chandrikapure Manohar Gowardhan	Nationalist Congress Party	72400	41.07%	Badole Rajkumar Sudam	Bharatiya Janata Party	71682	40.67%	718	0.41%
3	Daund	214048	Rahul Subhashrao Kul	Bharatiya Janata Party	103664	48.43%	Ramesh Kisanrao Thorat	Nationalist Congress Party	102918	48.08%	746	0.35%
4	Sangola	215468	Adv. Shahajibapu Rajaram Patil	Shiv Sena	99464	46.16%	Dr. Aniket Chandrakant Deshmukh	Peasants And Workers Party of India	98696	45.81%	768	0.36%
5	Kopergaon	202540	Aashutosh Ashokrao Kale	Nationalist Congress Party	87566	43.23%	Kolhe Snehalata Bipindada	Bharatiya Janata Party	86744	42.83%	822	0.41%

Table: MLAs with Margin of Victory less than 1000 votes

*Margin of Victory = Votes polled for winner – Votes Polled for the runners up

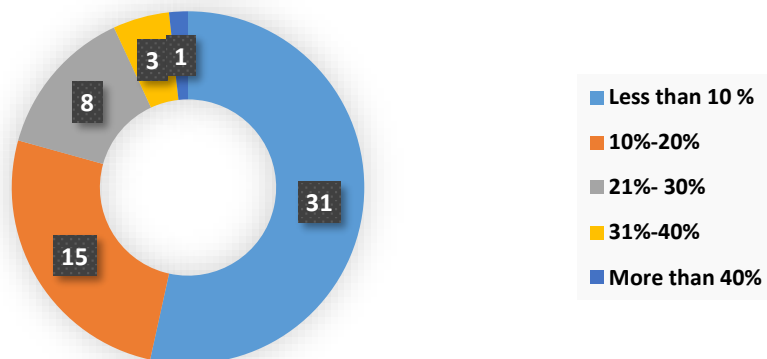
MLAs with Margin of Victory more than 50%: The details of MLAs with Margin of Victory more than 50% are given below:

S.No.	Constituency	Total Votes Polled in the Constituency	MLA	Party	Votes polled for Winner	% of Vote share	Runners up	Party	Votes Polled for Runners up	Vote Share % Runners up	Margin of Victory	Margin of Victory %
1	Palus-Kadegaon	206517	Kadam Vishwajeet Patangrao	Indian National Congress	171497	83.04%	Sanjay Ananda Vibhute	Shiv Sena	8976	4.35	162521	78.70%
2	Baramati	235040	Ajit Aanantao Pawar	Nationalist Congress Party	195641	83.24%	Gopichand Kundlik Padalkar	Bharatiya Janata Party	30376	12.92	165265	70.31%
3	Latur Rural	199599	Dhiraj Vilasrao Deshmukh	Indian National Congress	135006	67.64%	Sachin alias Ravi Ramraje Deshmukh	Shiv Sena	13524	6.78	121482	60.86%
4	Murbad	232861	Kisan Shankar Kathore	Bharatiya Janata Party	174068	74.75%	Pramod Vinayak Hindurao	Nationalist Congress Party	38028	16.33	136040	58.42%

S.No.	Constituency	Total Votes Polled in the Constituency	MLA	Party	Votes polled for Winner	% of Vote share	Runners up	Party	Votes Polled for Runners up	Vote Share % Runners up	Margin of Victory	Margin of Victory %
5	Malabar hill	123289	Mangal Prabhat Lodha	Bharatiya Janata Party	93538	75.87%	Heera Navaji Devasi	Indian National Congress	21666	17.57	71872	58.30%
6	Borivali	165964	Sunil Dattatraya Rane	Bharatiya Janata Party	123712	74.54%	Kumar Khilare	Indian National Congress	28691	17.29	95021	57.25%
7	Ratnagiri	163066	Uday Ravindra Samant	Shiv Sena	118484	72.66%	Sudesh Sadanand Mayekar	Nationalist Congress Party	31149	19.1	87335	53.56%
8	Worli	129074	Aaditya Uddhav Thackeray	Shiv Sena	89248	69.14%	Adv. (Dr.) Suresh Mane	Nationalist Congress Party	21821	16.91	67427	52.24%
9	Kopri-Pachpakhadi	173662	EKNATH SAMBHAJI SHINDE	Shiv Sena	113497	65.36%	GHADIGAONKAR SANJAY PANDURANG	Indian National Congress	24197	13.93	89300	51.42%

Table: MLAs with Margin of Victory more than 50%

% of Margin of Victory of MLAs with Declared Criminal Cases won Against Runners up with Clean Background



% of Margin of Victory of Crorepati Winner won Against Non- Crorepati Runners up

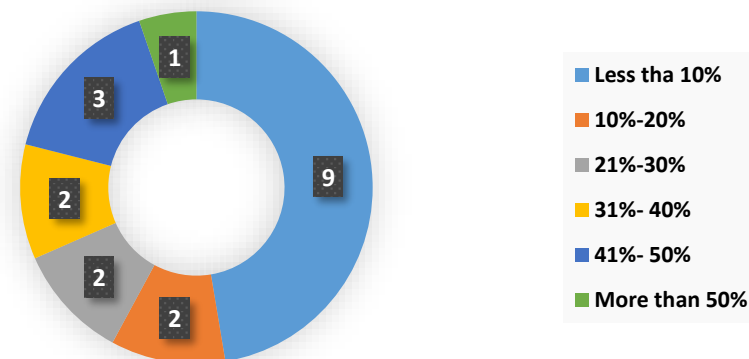


Figure: Margin of Victory of MLAs with declared criminal cases and Crorepati MLAs

MLAs with Declared Criminal Cases and their Margin of Victory:

5. 58 out of 176 MLAs with declared criminal cases have won against a runner up with a clean background.
6. Among these 58 MLAs, 12 MLAs have won with more than 20% margin of victory.
7. Among these, Awhad Jitendra Satish (NCP) from Mumbra- Kalwa constituency won with 42.24 % margin of victory.
8. There are 50 MLAs with a clean background who have won against a runner up with declared criminal cases. Out of these 50 MLAs, 4 have won with more than 40 % margin of victory.

Crorepati MLAs and their Margin of Victory:

-
5. 19 out of 264 crorepati MLAs have won against a non-crorepati runners up.
 6. Among these 19 MLAs, 4 MLAs have won with more than 40 % margin of victory.
 7. Among these, Eknath Sabhaji Shinde(SHS) from Kopri pachpakha constituency won with 51.42% margin of victory.
 8. There are 16 non-crorepati MLAs who have won against crorepati runners up. 4 of them have won with more than 20% of margin of victory.

Performance of Women MLAs in Maharashtra Assembly Elections, 2019

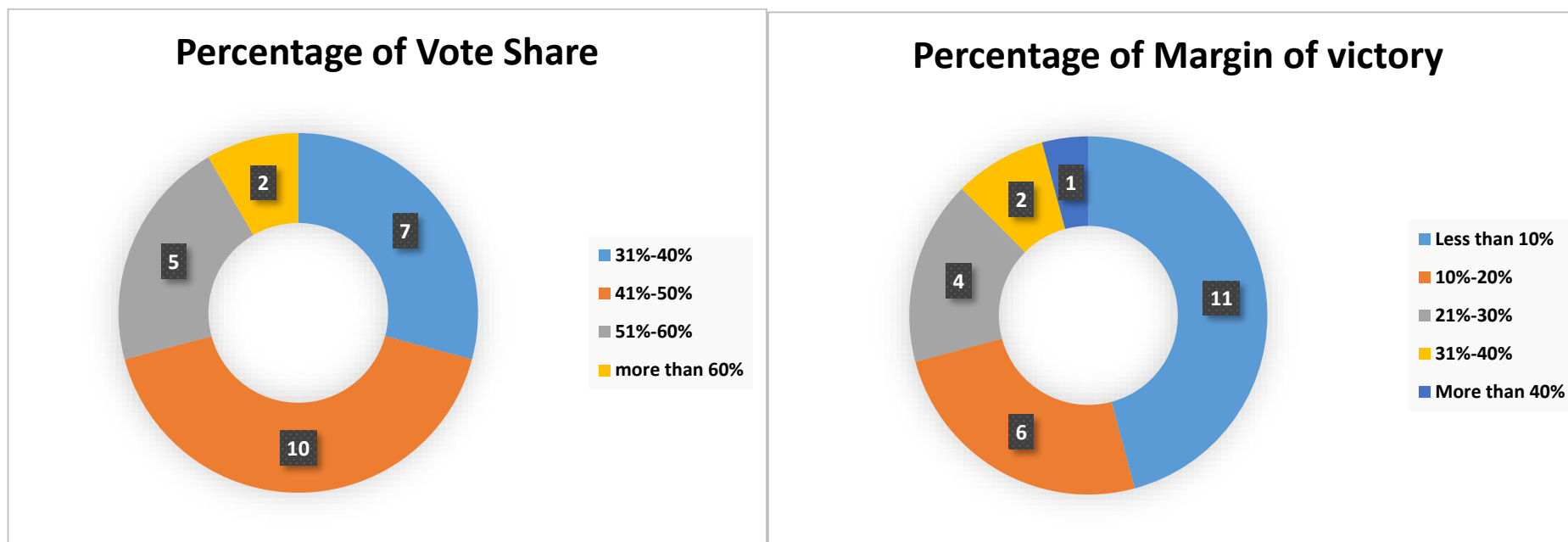
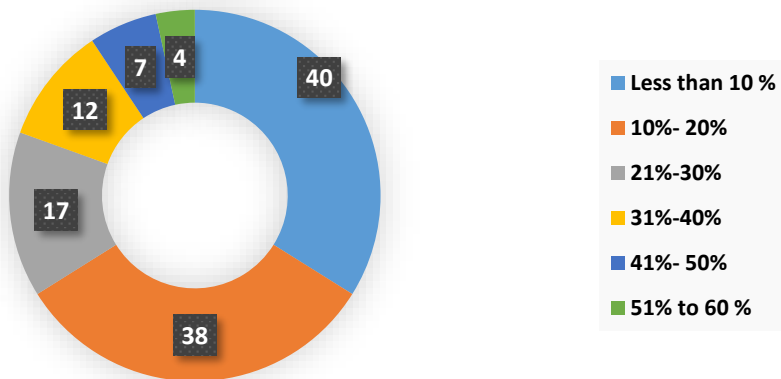


Figure: Performance of Women MLAs

- Among the 288 MLAs, 24 women have been analysed.
- All of them won with more than 30% of vote share in their constituencies.
- Among the women MLAs, Manisha Ashok Chaudhary (BJP) from Dhaisar Constituency has won with the highest vote share, i.e. 64.87 % in her constituency and 47.33% of margin of victory.

Performance of Re-elected MLAs in Maharashtra Assembly Elections, 2019

Percentage of Margin of Victory



Percentage of Vote Share

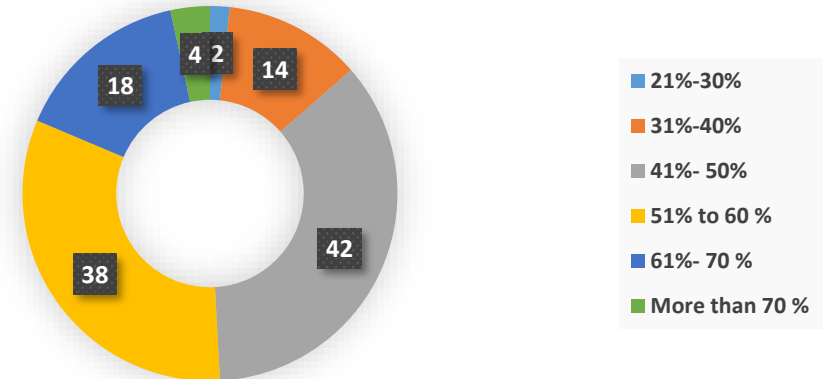


Figure: Performance of Re-Elected MLAs

Percentage Range	Vote Share	Margin of Victory
Less than 10 %	0	40
10%- 20%	0	38
21%-30%	2	17
31%-40%	14	12
41%- 50%	42	7
51% to 60 %	38	4
61%- 70 %	18	0
More than 70 %	4	0

Table: Performance of Re-Elected MLAs

- Out of total 118 re-elected MLAs **60** have won with more than 50% of vote share.
- **40** re-elected MLAs have won with less than 10% of margin of victory whereas 23 have won with more than 30% of margin of victory.

Details of NOTA

- The NOTA button instated by the ECI in 2013 gave the voters an options of rejecting all the candidates in their constituency. Out of 5,51,49,929 votes polled in Maharashtra Assembly, 2019, **7,42,134 (1.35%)** were polled for NOTA. Out of 5,29,01,326 votes polled in Maharashtra Assembly, 2014, **4,83,459 (0.91%)** were polled for NOTA.
- The top ten constituencies with highest votes polled for NOTA are as follows:

S.No.	Constituency	Total Votes in The Constituency	Votes polled for Winner	% of Vote Share of Winner	Votes Polled for Runners up	Vote Share % Runners up	Margin of Victory	Margin of Victory %	Votes Polled for NOTA	Votes Polled for NOTA %
1	Latur Rural	199599	135006	67.64%	13524	6.78%	121482	60.86%	27500	13.78%
2	Palus-Kadegaon	206517	171497	83.04%	8976	4.35%	162521	78.70%	20631	9.99%
3	Panvel	302481	179109	59.21%	86379	28.56%	92730	30.66%	12399	4.10%
4	Jogeshwari East	148965	90654	60.86%	31867	21.39%	58787	39.46%	12031	8.08%
5	Borivali	165964	123712	74.54%	28691	17.29%	95021	57.25%	10095	6.08%
6	VEKRAMGRTH	182841	88425	48.36%	67026	36.66%	21399	11.70%	8495	4.65%
7	Palghar	129392	68040	52.58%	27735	21.43%	40305	31.15%	7135	5.51%
8	Murbad	232861	174068	74.75%	38028	16.33%	136040	58.42%	6783	2.91%
9	Worli	129074	89248	69.14%	21821	16.91%	67427	52.24%	6305	4.88%
10	Kalyan Rural	197914	93927	47.46%	86773	43.84%	7154	3.61%	6092	3.08%

Table: Top 10 Constituencies with highest votes polled for NOTA

Vote Share and Margin of Victory of MLAs in Maharashtra Assembly Elections

S.No.	Constituency	Total Valid Votes in The Constituency	MLA	Party	Votes polled for Winner	% of Vote Share of Winner	Runners up	Party	Votes Polled for Runners up	Vote Share % Runners up	Margin of Victory	Margin of Victory %	Votes Polled for NOTA	Votes Polled for NOTA %
1	Baramati	235040	Ajit Aanantao Pawar	Nationalist Congress Party	195641	83.24%	Gopichand Kundlik Padalkar	Bharatiya Janata Party	30376	12.92%	165265	70.31%	1579	0.67%
2	Palus-Kadegaon	206517	Kadam Vishwajeet Patangrao	Indian National Congress	171497	83.04%	Sanjay Ananda Vibhute	Shiv Sena	8976	4.35%	162521	78.70%	20631	9.99%
3	Malabar hill	123289	Mangal Prabhat Lodha	Bharatiya Janata Party	93538	75.87%	Heera Navaji Devasi	Indian National Congress	21666	17.57%	71872	58.30%	5392	4.37%
4	Murbad	232861	Kisan Shankar Kathore	Bharatiya Janata Party	174068	74.75%	Pramod Vinayak Hindurao	Nationalist Congress Party	38028	16.33%	136040	58.42%	6783	2.91%
5	Borivali	165964	Sunil Dattatraya Rane	Bharatiya Janata Party	123712	74.54%	Kumar Khilare	Indian National Congress	28691	17.29%	95021	57.25%	10095	6.08%
6	Ratnagiri	163066	Uday Ravindra Samant	Shiv Sena	118484	72.66%	Sudesh Sadanand Mayekar	Nationalist Congress Party	31149	19.10%	87335	53.56%	4552	2.79%
7	Charkop	152192	Yogesh Sagar	Bharatiya Janata Party	108202	71.10%	Kalu Budhelia	Indian National Congress	34453	22.64%	73749	48.46%	4927	3.24%
8	Shirdi	186718	VIKHE PATIL RADHAKRISHNA EKNATHRAO	Bharatiya Janata Party	132316	70.86%	THORAT SURESH JAGANNATH	Indian National Congress	45292	24.26%	87024	46.61%	1596	0.85%
9	Worli	129074	Aaditya Uddhav Thackeray	Shiv Sena	89248	69.14%	Adv. (Dr.) Suresh Mane	Nationalist Congress Party	21821	16.91%	67427	52.24%	6305	4.88%

S.No.	Constituency	Total Valid Votes in The Constituency	MLA	Party	Votes polled for Winner	% of Vote Share of Winner	Runners up	Party	Votes Polled for Runners up	Vote Share % Runners up	Margin of Victory	Margin of Victory %	Votes Polled for NOTA	Votes Polled for NOTA %
10	Bhokar	207382	Ashokrao Shankarrao Chavan	Indian National Congress	140559	67.78%	Shrinivas alias Bapusaheb Deshmukh Gortekar	Bharatiya Janata Party	43114	20.79%	97445	46.99%	1297	0.63%
11	Latur Rural	199599	Dhiraj Vilasrao Deshmukh	Indian National Congress	135006	67.64%	Sachin alias Ravi Ramraje Deshmukh	Shiv Sena	13524	6.78%	121482	60.86%	27500	13.78%
12	Maval	248224	SUNIL SHANKARRAO SHELKE	Nationalist Congress Party	167712	67.56%	BALA ALIAS SANJAY VISHWANATH BHEGADE	Bharatiya Janata Party	73770	29.72%	93942	37.85%	1490	0.60%
13	Ambegaon	190032	Dilip Dattatray Walse Patil	Nationalist Congress Party	126120	66.37%	Bankhele Rajaram Bhivsen	Shiv Sena	59345	31.23%	66775	35.14%	1616	0.85%
14	Kopri-Pachpakhadi	173662	EKNATH SAMBHAJI SHINDE	Shiv Sena	113497	65.36%	GHADIGAONKAR SANJAY PANDURANG	Indian National Congress	24197	13.93%	89300	51.42%	5147	2.96%
15	Akole	174268	Dr. KIRAN YAMAJI LAHAMATE	Nationalist Congress Party	113414	65.08%	PICHAD VAIBHAV MADHUKARRAO	Bharatiya Janata Party	55725	31.98%	57689	33.10%	2298	1.32%
16	DHAISAR	135054	Chaudhary Manisha Ashok	Bharatiya Janata Party	87607	64.87%	Arun Sawant	Indian National Congress	23690	17.54%	63917	47.33%	4222	3.13%
17	Nandurbar	188489	VIJAYKUMAR KRUSHNARAO GAVIT	Bharatiya Janata Party	121605	64.52%	UDESING KOCHARU PADVI	Indian National Congress	51209	27.17%	70396	37.35%	3521	1.87%
18	SANGMNER	194733	VIJAY ALIAS BALASAHEB BHAUSAHEB THORAT	Indian National Congress	125380	64.39%	Sahebrao Ramchandra Navale	Shiv Sena	63128	32.42%	62252	31.97%	1692	0.87%
19	Mehkar	174816	Sanjay Bhaskar Raymulkar	Shiv Sena	112038	64.09%	Adv.Anant Sakharam Wankhede	Indian National Congress	49836	28.51%	62202	35.58%	2241	1.28%

S.No.	Constituency	Total Valid Votes in The Constituency	MLA	Party	Votes polled for Winner	% of Vote Share of Winner	Runners up	Party	Votes Polled for Runners up	Vote Share % Runners up	Margin of Victory	Margin of Victory %	Votes Polled for NOTA	Votes Polled for NOTA %
20	Tasgaon-Kavathe Mahankal	201272	Sumanvahini R.R. (Aba) Patil	Nationalist Congress Party	128371	63.78%	Ajitrao Shankarrao Ghorpade	Shiv Sena	65839	32.71%	62532	31.07%	1744	0.87%
21	Solapur City North	151673	DESHMUKH VIJAYKUMAR SIDRAMAPPA	Bharatiya Janata Party	96529	63.64%	ANAND BABURAO CHANDANSHIVE	Vanchit Bahujan Aaghadi	23461	15.47%	73068	48.17%	2153	1.42%
22	Kandivali East	134687	Atul Bhatkhalkar	Bharatiya Janata Party	85152	63.22%	Dr. Ajanta Rajpati Yadav	Indian National Congress	32798	24.35%	52354	38.87%	2780	2.06%
23	Madha	227108	Shinde Babanrao Vitthalrao	Nationalist Congress Party	142573	62.78%	Kokate Sanjay Shivilal	Shiv Sena	74328	32.73%	68245	30.05%	1628	0.72%
24	Yevla	201449	Chhagan Bhujbal	Nationalist Congress Party	126237	62.66%	Sambhaji Sahebrao Pawar	Shiv Sena	69712	34.61%	56525	28.06%	1027	0.51%
25	Jalgaon City	182127	Suresh Damu Bhole (Rajumama)	Bharatiya Janata Party	113310	62.21%	Abhishek shantaram patil	Nationalist Congress Party	48464	26.61%	64846	35.60%	4998	2.74%
26	Parner	226856	Nilesh Dnyandev Lanke	Nationalist Congress Party	139963	61.70%	Auti Vijayrao Bhaskarrao	Shiv Sena	80125	35.32%	59838	26.38%	1479	0.65%
27	Mumbra-Kalwa	179050	AWHAD JITENDRA SATISH	Nationalist Congress Party	109283	61.03%	DEEPALI JAHANGIR SAYED	Shiv Sena	33644	18.79%	75639	42.24%	2591	1.45%
28	Vile parle	139272	ALAVANI PARAG	Bharatiya Janata Party	84991	61.03%	JAYANTI JIVABHAI SIROYA	Indian National Congress	26564	19.07%	58427	41.95%	4286	3.08%
29	Jogeshwari East	148965	Ravindra Dattaram Waikar	Shiv Sena	90654	60.86%	Sunil Bisan Kumre	Indian National Congress	31867	21.39%	58787	39.46%	12031	8.08%
30	Ovala Majiwada	193669	PRATAP BABURAO SARNAIK	Shiv Sena	117593	60.72%	CHAVAN VIKRANT BHIMSEN	Indian National Congress	33585	17.34%	84008	43.38%	6054	3.13%

S.No.	Constituency	Total Valid Votes in The Constituency	MLA	Party	Votes polled for Winner	% of Vote Share of Winner	Runners up	Party	Votes Polled for Runners up	Vote Share % Runners up	Margin of Victory	Margin of Victory %	Votes Polled for NOTA	Votes Polled for NOTA %
31	Digras	225776	Rathod Sanjay Dulichand	Shiv Sena	136824	60.60%	Deshmukh Sanjay Uttamrao	Independent	73217	32.43%	63607	28.17%	1083	0.48%
32	Bhosari	263463	Mahesh (Dada) Kisan Landge	Bharatiya Janata Party	159295	60.46%	Lande Vilas Vithoba	Independent	81728	31.02%	77567	29.44%	3636	1.38%
33	Malegaon outer	203468	Bhuse Dadaji Dagdu	Shiv Sena	121252	59.59%	Dr.Tushar Ramkrushna Shewale	Indian National Congress	73568	36.16%	47684	23.44%	1485	0.73%
34	Magathane	151372	Prakash Rajaram Surve	Shiv Sena	90206	59.59%	Nayan Pradeep Kadam	Maharashtra Navnirman sena	41060	27.13%	49146	32.47%	4849	3.20%
35	Dindori	209170	Zirwal Narhari Sitaram	Nationalist Congress Party	124520	59.53%	Bhaskar Gopal Gavit	Shiv Sena	63707	30.46%	60813	29.07%	2298	1.10%
36	Dombivali	145332	Chavan Ravindra Dattatray	Bharatiya Janata Party	86227	59.33%	Mandar Shrikant Halbe	Maharashtra Navnirman sena	44916	30.91%	41311	28.43%	4134	2.84%
37	Panvel	302481	PRASHANT RAMSHETH THAKUR	Bharatiya Janata Party	179109	59.21%	HARESH MANOHAR KENI	Peasants And Workers Party of India	86379	28.56%	92730	30.66%	12399	4.10%
38	Satara	199849	Bhonsle Shivendrasinh Abhaysinhraje	Bharatiya Janata Party	118005	59.05%	Deepak Sahebrao Pawar	Nationalist Congress Party	74581	37.32%	43424	21.73%	1978	0.99%
39	Shrivardhan	157248	Aditi Sunil Tatkare	Nationalist Congress Party	92074	58.55%	Vinod Ramchandra Ghosalkar	Shiv Sena	52453	33.36%	39621	25.20%	3772	2.40%

S.No.	Constituency	Total Valid Votes in The Constituency	MLA	Party	Votes polled for Winner	% of Vote Share of Winner	Runners up	Party	Votes Polled for Runners up	Vote Share % Runners up	Margin of Victory	Margin of Victory %	Votes Polled for NOTA	Votes Polled for NOTA %
40	Malegaon central	200344	Mohammed Ismail Abdul Khalique	All India Majlis-E-Ittehadul Muslimeen	117242	58.52%	Aasif Shaikh Rasheed	Indian National Congress	78723	39.29%	38519	19.23%	1143	0.57%
41	Airoli	196424	Ganesh Naik	Bharatiya Janata Party	114645	58.37%	Ganesh Raghu Shinde	Nationalist Congress Party	36154	18.41%	78491	39.96%	5213	2.65%
42	DEOLALI	145165	SAROJ BABULAL AHIRE	Nationalist Congress Party	84326	58.09%	YOGESH BABANRAO GHOLAP	Shiv Sena	42624	29.36%	41702	28.73%	1241	0.85%
43	Ichalkaranji	201271	PRAKASHANNA AWADE	Independent	116886	58.07%	Suresh Ganapati Halwankar	Bharatiya Janata Party	67076	33.33%	49810	24.75%	1513	0.75%
44	CHANDRAPUR	202849	Jorgewar Kishor Gajanan	Independent	117570	57.96%	Nanaji Sitaramji Shamkule	Bharatiya Janata Party	44909	22.14%	72661	35.82%	1730	0.85%
45	Islampur	200015	Jayant Rajaram Patil	Nationalist Congress Party	115563	57.78%	Nishikant Prakash Bhosale- Patil (Dada)	Independent	43394	21.70%	72169	36.08%	1196	0.60%
46	Ghatkopar East	126616	Parag Shah	Bharatiya Janata Party	73054	57.70%	Satish Sitaram Pawar	Maharashtra Navnirman sena	19735	15.59%	53319	42.11%	3297	2.60%

S.No.	Constituency	Total Valid Votes in The Constituency	MLA	Party	Votes polled for Winner	% of Vote Share of Winner	Runners up	Party	Votes Polled for Runners up	Vote Share % Runners up	Margin of Victory	Margin of Victory %	Votes Polled for NOTA	Votes Polled for NOTA %
47	Kolhapur South	243645	Ruturaj Sanjay Patil	Indian National Congress	140103	57.50%	Amal Mahadik	Bharatiya Janata Party	97394	39.97%	42709	17.53%	1939	0.80%
48	Shivadi	135661	Ajay Vinayak Choudhari	Shiv Sena	77687	57.27%	Santosh Raghunath Nalawade	Maharashtra Navnirman sena	38350	28.27%	39337	29.00%	4308	3.18%
49	Wai	227883	Makrand Laxmanrao Jadhav (Patil)	Nationalist Congress Party	130486	57.26%	Madan Prataprao Bhosale	Bharatiya Janata Party	86839	38.11%	43647	19.15%	1358	0.60%
50	Vandre West	131004	ADV. ASHISH BABAJI SHELAR	Bharatiya Janata Party	74816	57.11%	ASIF AHMED ZAKARIA	Indian National Congress	48309	36.88%	26507	20.23%	3531	2.70%
51	Chiplun	177921	Shekhar Govindrao Nikam	Nationalist Congress Party	101578	57.09%	Chavan Sadanand Narayan	Shiv Sena	71654	40.27%	29924	16.82%	2297	1.29%
52	Karjat jamkhed	238360	Rohit Pawar	Nationalist Congress Party	135824	56.98%	Prof. Ram Shankar Shinde	Bharatiya Janata Party	92477	38.80%	43347	18.19%	867	0.36%
53	Baglan	166252	DILIP MANGLU BORSE	Bharatiya Janata Party	94683	56.95%	Sau. DIPIKA SANJAY CHAVAN	Nationalist Congress Party	60989	36.68%	33694	20.27%	1652	0.99%

S.No.	Constituency	Total Valid Votes in The Constituency	MLA	Party	Votes polled for Winner	% of Vote Share of Winner	Runners up	Party	Votes Polled for Runners up	Vote Share % Runners up	Margin of Victory	Margin of Victory %	Votes Polled for NOTA	Votes Polled for NOTA %
54	Nagpur South West	192118	Devendra Gangadharrao Fadnavis	Bharatiya Janata Party	109237	56.86%	Dr. Ashish Deshmukh	Indian National Congress	59893	31.18%	49344	25.68%	3064	1.59%
55	Shirpur	212092	Kashiram Vechan Pawara	Bharatiya Janata Party	120403	56.77%	Dr. Jitendra Yuvraj Thakur	Independent	71229	33.58%	49174	23.19%	3828	1.80%
56	SINDHKHEDA	200568	Jaykumar Jitendrasinh Rawal	Bharatiya Janata Party	113809	56.74%	Bedse Sandeep Tryambakrao	Nationalist Congress Party	70894	35.35%	42915	21.40%	1816	0.91%
57	Mulund	154537	Kotecha Mihir Chandrakant	Bharatiya Janata Party	87253	56.46%	Harshala Rajesh Chavan	Maharashtra Navnirman sena	29905	19.35%	57348	37.11%	5200	3.36%
58	Kankavli	150461	Nitesh Narayan Rane	Bharatiya Janata Party	84504	56.16%	Satish Jagannath Sawant	Shiv Sena	56388	37.48%	28116	18.69%	1945	1.29%
59	Shirur	258680	Ashok Raosaheb Pawar	Nationalist Congress Party	145131	56.10%	Pacharne Baburao Kashinath	Bharatiya Janata Party	103627	40.06%	41504	16.04%	1827	0.71%
60	Naigaon	210011	Rajesh Pawar	Bharatiya Janata Party	117750	56.07%	Chavan Vasantrao Balwantrao	Indian National Congress	63366	30.17%	54384	25.90%	960	0.46%

S.No.	Constituency	Total Valid Votes in The Constituency	MLA	Party	Votes polled for Winner	% of Vote Share of Winner	Runners up	Party	Votes Polled for Runners up	Vote Share % Runners up	Margin of Victory	Margin of Victory %	Votes Polled for NOTA	Votes Polled for NOTA %
61	Akkalkot	213490	Kalyanshetti Sachin Panchappa	Bharatiya Janata Party	119437	55.95%	Siddharam Satlingappa Mhetre	Indian National Congress	82668	38.72%	36769	17.22%	1168	0.55%
62	Parvati	173792	Madhuri Satish Misal	Bharatiya Janata Party	97012	55.82%	Ashwini Nitin Kadam	Nationalist Congress Party	60245	34.67%	36767	21.16%	3668	2.11%
63	Nalasopara	269070	KSHITIJ HITENDRA THAKUR	Bahujan Vikas Aaghadi	149868	55.70%	PRADEEP RAMESHWAR SHARMA	Shiv Sena	106139	39.45%	43729	16.25%	3221	1.20%
64	Nevasa	211582	SHANKARRAO YASHWANTRAO GADAKH	Krantikari Shetkari Party	116943	55.27%	Balasaheb Alias Dadasaheb Damodhar Murkute	Bharatiya Janata Party	86280	40.78%	30663	14.49%	316	0.15%
65	Guhagar	142708	BHASKAR BHABURAO JADHAV	Shiv Sena	78748	55.18%	BETKAR SAHADEV DEVJI	Nationalist Congress Party	52297	36.65%	26451	18.54%	2061	1.44%
66	Mukhed	186014	Tushar Govindrao Rathod	Bharatiya Janata Party	102573	55.14%	Bhausaheb Khushalrao Patil	Indian National Congress	70710	38.01%	31863	17.13%	1074	0.58%
67	Jamner	208765	Girish Dattatraya Mahajan	Bharatiya Janata Party	114714	54.95%	Sanjay Bhaskarrao Garud	Nationalist Congress Party	79700	38.18%	35014	16.77%	2105	1.01%

S.No.	Constituency	Total Valid Votes in The Constituency	MLA	Party	Votes polled for Winner	% of Vote Share of Winner	Runners up	Party	Votes Polled for Runners up	Vote Share % Runners up	Margin of Victory	Margin of Victory %	Votes Polled for NOTA	Votes Polled for NOTA %
68	Purandar	238061	SANJAY CHANDUKAKA JAGTAP	Indian National Congress	130710	54.91%	VIJAYBAPU SHIVTARE	Shiv Sena	99306	41.71%	31404	13.19%	1808	0.76%
69	Mumbadevi	107447	Amin Patel	Indian National Congress	58952	54.87%	Pandurang Ganpat Sakpal	Shiv Sena	35297	32.85%	23655	22.02%	1539	1.43%
70	Bhokardan	216925	Santosh Raosaheb Danve	Bharatiya Janata Party	118539	54.65%	Chandrakant Pundlikrao Danwe	Nationalist Congress Party	86049	39.67%	32490	14.98%	1629	0.75%
71	Phaltan	215604	Dipak Pralhad Chavan	Nationalist Congress Party	117617	54.55%	Agawane Digambar Rohidas	Bharatiya Janata Party	86636	40.18%	30981	14.37%	1717	0.80%
72	Parli	224272	DHANANJAY PANDITRAO MUNDE	Nationalist Congress Party	122114	54.45%	PANKAJA GOPINATHRAO MUNDE	Bharatiya Janata Party	91413	40.76%	30701	13.69%	561	0.25%
73	Parbhani	192260	Dr. Rahul Vedprakash Patil	Shiv Sena	104584	54.40%	Mohammad Gouse Zain	Vanchit Bahujan Aaghadi	22794	11.86%	81790	42.54%	1586	0.82%
74	Rahuri	201116	PRAJAKT PRASADRAO TANPURE	Nationalist Congress Party	109234	54.31%	KARDILE SHIVAJI BHANUDAS	Bharatiya Janata Party	85908	42.72%	23326	11.60%	1892	0.94%
75	Bhusawal	150654	Sanjay Waman Sawkare	Bharatiya Janata Party	81689	54.22%	Dr. Madhu Rajesh Manawatkar	Independent	28675	19.03%	53014	35.19%	3277	2.18%

S.No.	Constituency	Total Valid Votes in The Constituency	MLA	Party	Votes polled for Winner	% of Vote Share of Winner	Runners up	Party	Votes Polled for Runners up	Vote Share % Runners up	Margin of Victory	Margin of Victory %	Votes Polled for NOTA	Votes Polled for NOTA %
76	Vasai	190005	HITENDRA VISHNU THAKUR	Bahujan Vikas Aaghadi	102950	54.18%	VIJAY GOVIND PATIL	Shiv Sena	76955	40.50%	25995	13.68%	3036	1.60%
77	Chinchwad	278231	JAGTAP LAXMAN PANDURANG	Bharatiya Janata Party	150723	54.17%	KALATE RAHUL TANAJI	Independent	112225	40.34%	38498	13.84%	5874	2.11%
78	Shahuwadi	231495	Dr. Vinay Vilasrao Kore (Savkar)	Jan Surajya Shakti	124868	53.94%	Satyajit Babasaheb Patil (Aba) Sarudkar	Shiv Sena	97005	41.90%	27863	12.04%	942	0.41%
79	KHANPUR	216871	Anilbhai Babar	Shiv Sena	116974	53.94%	Sadashivrao Hanmantrao Patil	Independent	90683	41.81%	26291	12.12%	2928	1.35%
80	Kothrud	195157	CHANDRAKANT (Dada) BACHHU PATIL	Bharatiya Janata Party	105246	53.93%	Adv. KISHOR NANA SHINDE	Maharashtra Navnirman sena	79751	40.87%	25495	13.06%	4028	2.06%
81	Colaba	106630	Adv. Rahul Suresh Narwekar	Bharatiya Janata Party	57420	53.85%	Ashok Arjunrao alias Bhai Jagtap	Indian National Congress	41225	38.66%	16195	15.19%	2921	2.74%
82	Hinganghat	192412	Samir Trimbakrao Kunawar	Bharatiya Janata Party	103585	53.83%	Raju Alias Mohan Wasudeorao Timande	Nationalist Congress Party	53130	27.61%	50455	26.22%	1764	0.92%

S.No.	Constituency	Total Valid Votes in The Constituency	MLA	Party	Votes polled for Winner	% of Vote Share of Winner	Runners up	Party	Votes Polled for Runners up	Vote Share % Runners up	Margin of Victory	Margin of Victory %	Votes Polled for NOTA	Votes Polled for NOTA %
83	Kaij	229673	NAMITA AKSHAY MUNDADA	Bharatiya Janata Party	123433	53.74%	PRUTHVIRAJ SHIVAJI SATHE	Nationalist Congress Party	90524	39.41%	32909	14.33%	1598	0.70%
84	CHANDWAD	192628	DR. AHER RAHUL DAULATRAO	Bharatiya Janata Party	103454	53.71%	KOTWAL SHIRISHKUMAR VASANTRAO	Indian National Congress	75710	39.30%	27744	14.40%	1196	0.62%
85	Solapur South	162572	Deshmukh Subhash Sureshchandra	Bharatiya Janata Party	87223	53.65%	Moulali Bashumiya Sayyed (Baba Mistri)	Indian National Congress	57976	35.66%	29247	17.99%	1793	1.10%
86	Udgir	179662	Bansode Sanjay Baburao	Nationalist Congress Party	96366	53.64%	Anil Sadashiv Kamble	Bharatiya Janata Party	75787	42.18%	20579	11.45%	1097	0.61%
87	Mahad	190900	Gogawale Bharat Maruti	Shiv Sena	102273	53.57%	Manik Motiram Jagtap	Indian National Congress	80698	42.27%	21575	11.30%	2082	1.09%
88	Miraj	179884	Dr. Suresh (Bhau) Dagadu Khade	Bharatiya Janata Party	96369	53.57%	Balaso Dattatray Honmore	Swabhimani Paksha	65971	36.67%	30398	16.90%	2792	1.55%
89	Savner	211672	KEDAR SUNIL CHHATRAPAL	Indian National Congress	113184	53.47%	Rajeev Bhaskarrao Potdar	Bharatiya Janata Party	86893	41.05%	26291	12.42%	1819	0.86%

S.No.	Constituency	Total Valid Votes in The Constituency	MLA	Party	Votes polled for Winner	% of Vote Share of Winner	Runners up	Party	Votes Polled for Runners up	Vote Share % Runners up	Margin of Victory	Margin of Victory %	Votes Polled for NOTA	Votes Polled for NOTA %
90	Hingna	226866	Meghe Sameer Dattatraya	Bharatiya Janata Party	121305	53.47%	Ghodmare Vijaybabu Pandurangji	Nationalist Congress Party	75138	33.12%	46167	20.35%	2256	0.99%
91	Goregaon	152297	VIDYA JAIPRAKASH THAKUR	Bharatiya Janata Party	81233	53.34%	MOHITE YUVRAJ GANESH	Indian National Congress	32326	21.23%	48907	32.11%	4217	2.77%
92	Jalgaon Rural	198363	GULABRAO RAGHUNATH PATIL	Shiv Sena	105795	53.33%	ATTARADE CHANDRASHEKHAR PRAKASH	Independent	59066	29.78%	46729	23.56%	2382	1.20%
93	Karvir	256413	P. N.Patil (Sadolikar)	Indian National Congress	135675	52.91%	Narake Chandradeep Shashikant	Shiv Sena	113014	44.07%	22661	8.84%	1284	0.50%
94	Loha	192695	Shyamsundar Shinde	Peasants And Workers Party of India	101668	52.76%	Shivkumar Narayanrao Narangale	Vanchit Bahujan Aaghadi	37306	19.36%	64362	33.40%	1249	0.65%
95	Gangapur	203483	Bamb Prashant Bansilal	Bharatiya Janata Party	107193	52.68%	Mane Patil Santosh Annasaheb	Nationalist Congress Party	72222	35.49%	34971	17.19%	1491	0.73%

S.No.	Constituency	Total Valid Votes in The Constituency	MLA	Party	Votes polled for Winner	% of Vote Share of Winner	Runners up	Party	Votes Polled for Runners up	Vote Share % Runners up	Margin of Victory	Margin of Victory %	Votes Polled for NOTA	Votes Polled for NOTA %
96	Ashti	240838	Ajabe Balasaheb Bhausahab	Nationalist Congress Party	126756	52.63%	Bhimrao Anandrao Dhonde	Bharatiya Janata Party	100931	41.91%	25825	10.72%	2631	1.09%
97	Dindoshi	156236	Sunil Prabhu	Shiv Sena	82203	52.61%	Vidya Chavan	Nationalist Congress Party	37692	24.13%	44511	28.49%	3266	2.09%
98	Palghar	129392	SHRINIVAS CHINTAMAN VANGA	Shiv Sena	68040	52.58%	YOGESH SHANKAR NAM	Indian National Congress	27735	21.43%	40305	31.15%	7135	5.51%
99	Latur City	211787	Amit Vilasrao Deshmukh	Indian National Congress	111156	52.48%	Shailesh Govindkumar Lahoti	Bharatiya Janata Party	70741	33.40%	40415	19.08%	727	0.34%
100	Nagpur East	198641	KRUSHNA PANCHAM KHOPDE	Bharatiya Janata Party	103992	52.35%	PURUSHOTTAM NAGORAO HAJARE	Indian National Congress	79975	40.26%	24017	12.09%	3460	1.74%
101	Partur	203633	BABANRAO DATTATRYA YADAV(LONIKAR)	Bharatiya Janata Party	106321	52.21%	JETHLIYA SURESHKUMAR KANHAIYALAL	Indian National Congress	80379	39.47%	25942	12.74%	1151	0.57%

S.No.	Constituency	Total Valid Votes in The Constituency	MLA	Party	Votes polled for Winner	% of Vote Share of Winner	Runners up	Party	Votes Polled for Runners up	Vote Share % Runners up	Margin of Victory	Margin of Victory %	Votes Polled for NOTA	Votes Polled for NOTA %
102	Alibag	214825	Mahendra Hari Dalvi	Shiv Sena	111946	52.11%	Subhash Alias Panditshet Patil	Peasants And Workers Party of India	79022	36.78%	32924	15.33%	2313	1.08%
103	Pen	215926	Ravisheth Patil	Bharatiya Janata Party	112380	52.05%	Dhairiyashil Mohan Patil	Peasants And Workers Party of India	88329	40.91%	24051	11.14%	2473	1.15%
104	Wadala	108600	Kalidas Nilkanth Kolambkar	Bharatiya Janata Party	56485	52.01%	Shivkumar Uday Lad	Indian National Congress	25640	23.61%	30845	28.40%	3432	3.16%
105	Patan	204312	DESAI SHAMBHURAJ SHIVAJIRAO	Shiv Sena	106266	52.01%	SATYAJIT VIKRAMSINH PATANKAR	Nationalist Congress Party	92091	45.07%	14175	6.94%	1547	0.76%
106	Kolhapur North	175207	Chandrakant Pandit Jadhav	Indian National Congress	91053	51.97%	Rajesh Vinayak Kshirsagar	Shiv Sena	75854	43.29%	15199	8.67%	3039	1.73%
107	Akola East	193339	Randhir Pralhadrao Sawarkar	Bharatiya Janata Party	100475	51.97%	Bhade Haridas Pandhari	Vanchit Bahujan Aaghadi	75752	39.18%	24723	12.79%	2381	1.23%
108	Thane	178258	KELKAR SANJAY MUKUND	Bharatiya Janata Party	92298	51.78%	AVINASH ANANT JADHAV	Maharashtra Navnirman sena	72874	40.88%	19424	10.90%	5547	3.11%

S.No.	Constituency	Total Valid Votes in The Constituency	MLA	Party	Votes polled for Winner	% of Vote Share of Winner	Runners up	Party	Votes Polled for Runners up	Vote Share % Runners up	Margin of Victory	Margin of Victory %	Votes Polled for NOTA	Votes Polled for NOTA %
109	Sillod	238428	Abdul Sattar Abdul Nabi	Shiv Sena	123383	51.75%	Prabhakar Manikrao Palodkar	Independent	99002	41.52%	24381	10.23%	2844	1.19%
110	Igatpuri	167289	Hiraman Bhika Khoskar	Indian National Congress	86561	51.74%	Nirmala Ramesh Gavit	Shiv Sena	55006	32.88%	31555	18.86%	3059	1.83%
111	Dapoli	185861	Kadam Yogeshdada Ramdas	Shiv Sena	95364	51.31%	Kadam Sanjayrao Vasant	Nationalist Congress Party	81786	44.00%	13578	7.31%	2711	1.46%
112	OMERGA	169262	Chougule Dnyanraj Dhondiram	Shiv Sena	86773	51.27%	Bhalerao Dattu Rohidas	Indian National Congress	61187	36.15%	25586	15.12%	1425	0.84%
113	Dhule Rural	245347	Kunalbaba Rohidas Patil	Indian National Congress	125575	51.18%	Maisaheb Dnyanjyoti Manohar Patil	Bharatiya Janata Party	111011	45.25%	14564	5.94%	2248	0.92%
114	Karjat	200243	Mahendra Sadashiv Thorve	Shiv Sena	102208	51.04%	Sureshbhau Narayan Lad	Nationalist Congress Party	84162	42.03%	18046	9.01%	3072	1.53%
115	Katol	190017	Anil Deshmukh	Nationalist Congress Party	96842	50.96%	Charansing Babulalji Thakur	Bharatiya Janata Party	79785	41.99%	17057	8.98%	2004	1.05%
116	Kudal	135900	Naik Vaibhav Vijay	Shiv Sena	69168	50.90%	Ranjit Dattatray Desai	Independent	54819	40.34%	14349	10.56%	1552	1.14%

S.No.	Constituency	Total Valid Votes in The Constituency	MLA	Party	Votes polled for Winner	% of Vote Share of Winner	Runners up	Party	Votes Polled for Runners up	Vote Share % Runners up	Margin of Victory	Margin of Victory %	Votes Polled for NOTA	Votes Polled for NOTA %
117	Ausa	187334	Abhimanyu Dattatray Pawar	Bharatiya Janata Party	95340	50.89%	Basavaraj Mahadvarao Patil	Indian National Congress	68626	36.63%	26714	14.26%	783	0.42%
118	Shrirampur	184606	Kanade Lahu Natha	Indian National Congress	93906	50.87%	Bhausahab Malhari Kamble	Shiv Sena	74912	40.58%	18994	10.29%	2133	1.16%
119	Malad West	156318	Aslam Ramzanali Shaikh	Indian National Congress	79514	50.87%	Thakur Ramesh singh	Bharatiya Janata Party	69131	44.22%	10383	6.64%	3490	2.23%
120	Amalner	184906	Anil Bhaidas Patil	Nationalist Congress Party	93757	50.71%	Shirish Dada Hiralal Chaudhari	Bharatiya Janata Party	85163	46.06%	8594	4.65%	1503	0.81%
121	Jalgaon (Jamod)	203737	Kute Dr. Sanjay Shriram	Bharatiya Janata Party	102735	50.43%	Dr. Swati Sandeep Wakekar	Indian National Congress	67504	33.13%	35231	17.29%	2232	1.10%
122	Karad North	199447	Balasaheb Urf Shamrao Pandurang Patil	Nationalist Congress Party	100509	50.39%	Manoj Bhimrao Ghorpade	Independent	51294	25.72%	49215	24.68%	1280	0.64%
123	Daryapur	190346	Balwant Baswant Wankhade	Indian National Congress	95889	50.38%	Bundile Ramesh Ganpatrao	Bharatiya Janata Party	65370	34.34%	30519	16.03%	1376	0.72%
124	Belapur	174527	MANDA VIJAY MHATRE	Bharatiya Janata Party	87858	50.34%	ASHOK ANKUSH GAWADE	Nationalist Congress Party	44261	25.36%	43597	24.98%	3804	2.18%

S.No.	Constituency	Total Valid Votes in The Constituency	MLA	Party	Votes polled for Winner	% of Vote Share of Winner	Runners up	Party	Votes Polled for Runners up	Vote Share % Runners up	Margin of Victory	Margin of Victory %	Votes Polled for NOTA	Votes Polled for NOTA %
125	KASBA PETH	150069	Mukta Shailesh Tilak	Bharatiya Janata Party	75492	50.30%	Arvind Shinde	Indian National Congress	47296	31.52%	28196	18.79%	2532	1.69%
126	Deglur	178131	Antapurkar Raosaheb Jayvanta	Indian National Congress	89407	50.19%	Sabne Subhash Pirajirao	Shiv Sena	66974	37.60%	22433	12.59%	1676	0.94%
127	Vaijapur	195938	Bornare Ramesh Nanasaheb	Shiv Sena	98183	50.11%	Abhay Kailasrao Patil	Nationalist Congress Party	39020	19.91%	59163	30.19%	970	0.50%
128	Morshi	191974	Devendra Mahadevrao Bhuyar	Swabhimani Paksha	96152	50.09%	Dr. Anil Sukhdeorao Bonde	Bharatiya Janata Party	86361	44.99%	9791	5.10%	1769	0.92%
129	BRAMHAPURI	193468	VIJAY NAMDEVRAO WADETTIWAR	Indian National Congress	96726	50.00%	SANDIP WAMANRAO GADDAMWAR	Shiv Sena	78177	40.41%	18549	9.59%	1099	0.57%
130	Gadchiroli	196298	Dr. Deorao Madguji Holi	Bharatiya Janata Party	97913	49.88%	Dr. Chanda Nitin Kodwate	Indian National Congress	62572	31.88%	35341	18.00%	2273	1.16%
131	Badnapur	211577	Kuche Narayan Tilakchand	Bharatiya Janata Party	105312	49.77%	Choudhari Rupkumar Alias Bablu Nehrual	Nationalist Congress Party	86700	40.98%	18612	8.80%	1753	0.83%

S.No.	Constituency	Total Valid Votes in The Constituency	MLA	Party	Votes polled for Winner	% of Vote Share of Winner	Runners up	Party	Votes Polled for Runners up	Vote Share % Runners up	Margin of Victory	Margin of Victory %	Votes Polled for NOTA	Votes Polled for NOTA %
132	Shevgaon	226258	Monica Rajeev Rajale	Bharatiya Janata Party	112509	49.73%	Adv. Dhakne Prataprao Babanrao	Nationalist Congress Party	98215	43.41%	14294	6.32%	2186	0.97%
133	JAT	175425	Vikramsinh Balasaheb Sawant	Indian National Congress	87184	49.70%	Jagtap Vilasrao Narayan	Bharatiya Janata Party	52510	29.93%	34674	19.77%	1086	0.62%
134	Sangli	188683	Dhananjay Alias Sudhir Hari Gadgil	Bharatiya Janata Party	93636	49.63%	Prithviraj Gulabrao Patil	Indian National Congress	86697	45.95%	6939	3.68%	2448	1.30%
135	Paranda	214966	Tanaji Jaywant Sawant	Shiv Sena	106674	49.62%	Rahul Maharudra Mote	Nationalist Congress Party	73772	34.32%	32902	15.31%	1902	0.88%
136	Koregaon	204684	Mahesh Sambhajiraje Shinde	Shiv Sena	101487	49.58%	Shashikant Jaywantrao Shinde	Nationalist Congress Party	95255	46.54%	6232	3.04%	1284	0.63%
137	Mahim	124028	Sada Sarvankar	Shiv Sena	61337	49.45%	Sandeep Sudhakar Deshpande	Maharashtra Navnirman sena	42690	34.42%	18647	15.03%	3912	3.15%
138	Rajapur	132392	Rajan Prabhakar Salvi	Shiv Sena	65433	49.42%	Avinash Shantaram Lad	Indian National Congress	53557	40.45%	11876	8.97%	2576	1.95%

S.No.	Constituency	Total Valid Votes in The Constituency	MLA	Party	Votes polled for Winner	% of Vote Share of Winner	Runners up	Party	Votes Polled for Runners up	Vote Share % Runners up	Margin of Victory	Margin of Victory %	Votes Polled for NOTA	Votes Polled for NOTA %
139	Arvi	176929	Dadarao Yadaorao Kechhe	Bharatiya Janata Party	87318	49.35%	Kale Amar Sharadrao	Indian National Congress	74851	42.31%	12467	7.05%	1416	0.80%
140	Nilanga	197318	Nilangekar Sambhaji Diliprao Patil	Bharatiya Janata Party	97324	49.32%	Ashokrao Shivajirao Patil Nilangekar	Indian National Congress	65193	33.04%	32131	16.28%	1272	0.64%
141	Jalna	186340	Gorantyal Kailas Kisanrao	Indian National Congress	91835	49.28%	Arjun Panditrao Khotkar	Shiv Sena	66497	35.69%	25338	13.60%	848	0.46%
142	Indapur	233498	DATTATRAY VITHOBA BHARANE	Nationalist Congress Party	114960	49.23%	HARSHAVARDHAN SHAHAJIRAO PATIL	Bharatiya Janata Party	111850	47.90%	3110	1.33%	731	0.31%
143	Andheri West	133279	Ameet Bhaskar Satam	Bharatiya Janata Party	65615	49.23%	Ashok Bhau Jadhav	Indian National Congress	46653	35.00%	18962	14.23%	3103	2.33%
144	GONDIA	209384	Vinod Agrawal	Independent	102996	49.19%	Agrawal Gopaladas Shankarlal	Bharatiya Janata Party	75827	36.21%	27169	12.98%	1857	0.89%
145	Vikhroli	127951	Raut Sunil Rajaram	Shiv Sena	62794	49.08%	Dhananjay (Dada) Pisal	Nationalist Congress Party	34953	27.32%	27841	21.76%	3168	2.48%
146	Pimpri	177595	ANNA DADU BANSODE	Nationalist Congress Party	86985	48.98%	Adv. Chabukswar Gautam Sukhdev	Shiv Sena	67177	37.83%	19808	11.15%	3246	1.83%

S.No.	Constituency	Total Valid Votes in The Constituency	MLA	Party	Votes polled for Winner	% of Vote Share of Winner	Runners up	Party	Votes Polled for Runners up	Vote Share % Runners up	Margin of Victory	Margin of Victory %	Votes Polled for NOTA	Votes Polled for NOTA %
147	Shrigonda	211311	Pachpute Babanrao Bhikaji	Bharatiya Janata Party	103258	48.87%	Ghanshyam Prataprao Shelar	Nationalist Congress Party	98508	46.62%	4750	2.25%	1575	0.75%
148	Majalgaon	228336	Prakash (Dada) Sundarrao Solanke	Nationalist Congress Party	111566	48.86%	Ramesh Baburao Kokate (Adaskar)	Bharatiya Janata Party	98676	43.22%	12890	5.65%	780	0.34%
149	Sinnar	198935	Adv. KOKATE MANIKRAO SHIVAJIRAO	Nationalist Congress Party	97011	48.77%	RAJABHAU (PARAG) PRAKASH WAJE	Shiv Sena	94939	47.72%	2072	1.04%	1709	0.86%
150	Kinwat	184556	Bhimrao Ramji Keram	Bharatiya Janata Party	89628	48.56%	JADHAV PRADEEP NAIK	Nationalist Congress Party	76356	41.37%	13272	7.19%	1041	0.56%
151	Sawantwadi	143833	Deepak Vasantrao Kesarkar	Shiv Sena	69784	48.52%	Rajan Krishna Teli	Independent	56556	39.32%	13228	9.20%	3524	2.45%
152	Badnera	186665	Ravi Rana	Independent	90460	48.46%	Band Priti Sanjay	Shiv Sena	74919	40.14%	15541	8.33%	1329	0.71%
153	Daund	214048	Rahul Subhashrao Kul	Bharatiya Janata Party	103664	48.43%	Ramesh Kisanrao Thorat	Nationalist Congress Party	102918	48.08%	746	0.35%	917	0.43%
154	VEGRAMGRTH	182841	Bhusara Sunil Chandrakant	Nationalist Congress Party	88425	48.36%	Dr.Hemant Vishnu Savara	Bharatiya Janata Party	67026	36.66%	21399	11.70%	8495	4.65%

S.No.	Constituency	Total Valid Votes in The Constituency	MLA	Party	Votes polled for Winner	% of Vote Share of Winner	Runners up	Party	Votes Polled for Runners up	Vote Share % Runners up	Margin of Victory	Margin of Victory %	Votes Polled for NOTA	Votes Polled for NOTA %
155	BHIWANDI RURAL	172814	Shantaram Tukaram More	Shiv Sena	83567	48.36%	Shubhangi Ramesh Govari	Maharashtra Navnirman sena	39058	22.60%	44509	25.76%	3340	1.93%
156	Mankhurd shivajiNagar	143391	Abu Asim Azmi	Samajwadi Party	69082	48.18%	Vithal Govind Lokare	Shiv Sena	43481	30.32%	25601	17.85%	1876	1.31%
157	Amgaon	183259	KOROTE SAHASRAM MAROTI	Indian National Congress	88265	48.16%	SANJAY HANWANTRAO PURAM	Bharatiya Janata Party	80845	44.12%	7420	4.05%	1884	1.03%
158	Chikhli	194182	SHWETA VIDYADHAR MAHALE	Bharatiya Janata Party	93515	48.16%	BONDRE RAHUL SIDDHAVINAYAK	Indian National Congress	86705	44.65%	6810	3.51%	1035	0.53%
159	Khadakwasala	250372	Bhimrao (Anna) Dhondiba Tapkir	Bharatiya Janata Party	120518	48.14%	Dodke Sachin Shivaji	Nationalist Congress Party	117923	47.10%	2595	1.04%	3561	1.42%
160	AURANGABAD EAST	195347	ATUL MORESHWAR SAVE	Bharatiya Janata Party	93966	48.10%	Dr. ABDUL GAFFAR QUADRI SYED	All India Majlis-E-Ittehadul Muslimeen	80036	40.97%	13930	7.13%	1953	1.00%
161	Malshiras	215243	Ram Vitthal Satpute	Bharatiya Janata Party	103507	48.09%	Uttamrao Shivdas Jankar	Nationalist Congress Party	100917	46.89%	2590	1.20%	1899	0.88%

S.No.	Constituency	Total Valid Votes in The Constituency	MLA	Party	Votes polled for Winner	% of Vote Share of Winner	Runners up	Party	Votes Polled for Runners up	Vote Share % Runners up	Margin of Victory	Margin of Victory %	Votes Polled for NOTA	Votes Polled for NOTA %
162	Amravati	172723	Sulbha Sanjay Khodke	Indian National Congress	82581	47.81%	Dr. Sunil Panjabrao Deshmukh	Bharatiya Janata Party	64313	37.23%	18268	10.58%	1944	1.13%
163	Ahmednagar City	170151	Sangram Arunkaka Jagtap	Nationalist Congress Party	81217	47.73%	Anil Bhaiyya Ramkisan Rathod	Shiv Sena	70078	41.19%	11139	6.55%	2724	1.60%
164	Bhor	228263	SANGRAM ANANTRAO THOPTÉ	Indian National Congress	108925	47.72%	KULDIP SUDAM KONDE	Shiv Sena	99719	43.69%	9206	4.03%	1827	0.80%
165	Nashik East	181019	Adv. Rahul Uattamrao Dhikle	Bharatiya Janata Party	86304	47.68%	Balasaheb Mahadu Sanap	Nationalist Congress Party	74304	41.05%	12000	6.63%	3090	1.71%
166	Hingoli	200319	Tanhaji Sakhamaji Mutkule	Bharatiya Janata Party	95318	47.58%	Patil Bhaurao Baburao	Indian National Congress	71253	35.57%	24065	12.01%	1369	0.68%
167	Kalyan Rural	197914	Pramod (Raju) Ratan Patil	Maharashtra Navnirman sena	93927	47.46%	Mhatre Ramesh Sukrya	Shiv Sena	86773	43.84%	7154	3.61%	6092	3.08%
168	Nashik central	155311	DEVYANI SUHAS PHARANDE	Bharatiya Janata Party	73460	47.30%	HEMLATA NINAD PATIL	Indian National Congress	45062	29.01%	28398	18.28%	2493	1.61%
169	Niphad	204262	Bankar Diliprao Shankarrao	Nationalist Congress Party	96354	47.17%	Anil Sahebrao Kadam	Shiv Sena	78686	38.52%	17668	8.65%	1221	0.60%

S.No.	Constituency	Total Valid Votes in The Constituency	MLA	Party	Votes polled for Winner	% of Vote Share of Winner	Runners up	Party	Votes Polled for Runners up	Vote Share % Runners up	Margin of Victory	Margin of Victory %	Votes Polled for NOTA	Votes Polled for NOTA %
170	GANSAVANGI	229049	Rajeshbhaiyya Tope	Nationalist Congress Party	107849	47.09%	Udhan Hikmat Baliram	Shiv Sena	104440	45.60%	3409	1.49%	1842	0.80%
171	Wardha	169363	Dr. Pankaj Rajesh Bhoyar	Bharatiya Janata Party	79739	47.08%	Shekhar Pramod Shende	Indian National Congress	71806	42.40%	7933	4.68%	2729	1.61%
172	Pusad	189456	Naik Indranil Manohar	Nationalist Congress Party	89143	47.05%	Nilay Madhukar Naik	Bharatiya Janata Party	79442	41.93%	9701	5.12%	1445	0.76%
173	Ghatkopar West	149453	Ram Kadam	Bharatiya Janata Party	70263	47.01%	Sanjay Bhalerao	Independent	41474	27.75%	28789	19.26%	2297	1.54%
174	shahapur	161955	DAULAT BHIKA DARODA	Nationalist Congress Party	76053	46.96%	BARORA PANDURANG MAHADU	Shiv Sena	60949	37.63%	15104	9.33%	4313	2.66%
175	Anushakti Nagar	139226	NAWAB MALIK	Nationalist Congress Party	65217	46.84%	TUKARAM RAMKRUSHNA KATE	Shiv Sena	52466	37.68%	12751	9.16%	2290	1.64%
176	Nagpur West	178469	Vikas Pandurang Thakre	Indian National Congress	83252	46.65%	Sudhakar Shamrao Deshmukh	Bharatiya Janata Party	76885	43.08%	6367	3.57%	3717	2.08%
177	PHOLAMBARI	228054	Bagde Haribhau Kisanrao	Bharatiya Janata Party	106190	46.56%	Dr. Kalyan Vaijinathrao Kale	Indian National Congress	90916	39.87%	15274	6.70%	1301	0.57%

S.No.	Constituency	Total Valid Votes in The Constituency	MLA	Party	Votes polled for Winner	% of Vote Share of Winner	Runners up	Party	Votes Polled for Runners up	Vote Share % Runners up	Margin of Victory	Margin of Victory %	Votes Polled for NOTA	Votes Polled for NOTA %
178	Umred	197658	Raju Devnath Parwe	Indian National Congress	91968	46.53%	Sudhir Laxman Parwe	Bharatiya Janata Party	73939	37.41%	18029	9.12%	1724	0.87%
179	Melghat	181941	Rajkumar Dayaram Patel	Prahar Janshakti Party	84569	46.48%	Ramesh Mawaskar	Bharatiya Janata Party	43207	23.75%	41362	22.73%	2835	1.56%
180	Muktainagar	196220	Chandrakant Nimba Patil	Independent	91092	46.42%	Khadse Rohini Eknathrao	Bharatiya Janata Party	89135	45.43%	1957	1.00%	1806	0.92%
181	Nagpur central	163238	VIKAS SHANKARRAO KUMBHARE	Bharatiya Janata Party	75692	46.37%	BUNTY BABA SHELKE	Indian National Congress	71684	43.91%	4008	2.46%	2149	1.32%
182	Erandol	178375	CHIMANRAO RUPCHAND PATIL	Shiv Sena	82650	46.33%	ANNASAHEB DR. SATISH BHASKARRAO PATIL	Nationalist Congress Party	64648	36.24%	18002	10.09%	1995	1.12%
183	Malkapur	186252	Ekade Rajesh Panditrao	Indian National Congress	86276	46.32%	Chainsukh Madanlal Sancheti	Bharatiya Janata Party	71892	38.60%	14384	7.72%	1854	1.00%
184	Sangola	215468	Adv. Shahajibapu Rajaram Patil	Shiv Sena	99464	46.16%	Dr. Aniket Chandrakant Deshmukh	Peasants And Workers Party of India	98696	45.81%	768	0.36%	700	0.32%

S.No.	Constituency	Total Valid Votes in The Constituency	MLA	Party	Votes polled for Winner	% of Vote Share of Winner	Runners up	Party	Votes Polled for Runners up	Vote Share % Runners up	Margin of Victory	Margin of Victory %	Votes Polled for NOTA	Votes Polled for NOTA %
185	Ralegaon	197676	Ashok Ramaji Wooike (Uiike)	Bharatiya Janata Party	90823	45.95%	Vasant Chindhuji Purke	Indian National Congress	80948	40.95%	9875	5.00%	2056	1.04%
186	Khamgaon	198171	AKASH PANDURANG FUNDKAR	Bharatiya Janata Party	90757	45.80%	DNYANESHWAR PURUSHOTTAM PATIL	Indian National Congress	73789	37.24%	16968	8.56%	1873	0.95%
187	Kamthi	259312	SAWARKAR TEKCHAND SHRAWAN	Bharatiya Janata Party	118182	45.58%	SURESH YADAVRAO BHOYAR	Indian National Congress	107066	41.29%	11116	4.29%	2347	0.91%
188	VADGAON SHERI	214602	Sunil Vijay Tingre	Nationalist Congress Party	97700	45.53%	Mulik Jagdish Tukaram	Bharatiya Janata Party	92725	43.21%	4975	2.32%	2417	1.13%
189	Jintur	257157	Bordikar Meghna Deepak Sakore	Bharatiya Janata Party	116913	45.46%	Bhambale Vijay Manikrao	Nationalist Congress Party	113196	44.02%	3717	1.45%	1460	0.57%
190	Dharavi	119077	Gaikwad Varsha Eknath	Indian National Congress	53954	45.31%	Ashish Vasant More	Shiv Sena	42130	35.38%	11824	9.93%	1869	1.57%
191	Tirora	169301	Vijay Bharatlal Rahangdale	Bharatiya Janata Party	76482	45.18%	Bopche Ravikant Alias Guddu Khushal	Nationalist Congress Party	50519	29.84%	25963	15.34%	1841	1.09%

S.No.	Constituency	Total Valid Votes in The Constituency	MLA	Party	Votes polled for Winner	% of Vote Share of Winner	Runners up	Party	Votes Polled for Runners up	Vote Share % Runners up	Margin of Victory	Margin of Victory %	Votes Polled for NOTA	Votes Polled for NOTA %
192	Bhandup West	159282	Ramesh Gajanan Korgaonkar	Shiv Sena	71955	45.17%	Sandeep Prabhakar Jalgaonkar	Maharashtra Navnirman sena	42782	26.86%	29173	18.32%	3732	2.34%
193	Beed	221294	Sandeep Ravindra Kshirsagar	Nationalist Congress Party	99934	45.16%	Jaydattaji Sonajirao Kshirsagar	Shiv Sena	97950	44.26%	1984	0.90%	874	0.39%
194	Shahada	210393	Rajesh Udesing Padvi	Bharatiya Janata Party	94931	45.12%	Adv.Padmakar Vijaysing Valvi	Indian National Congress	86940	41.32%	7991	3.80%	3449	1.64%
195	Ambarnath	133919	Dr. Kinikar Balaji Pralhad	Shiv Sena	60083	44.87%	Rohit Chandrakant Salve	Indian National Congress	30789	22.99%	29294	21.87%	4322	3.23%
196	Mohol	201808	Mane Yashwant Vitthal	Nationalist Congress Party	90532	44.86%	Kshirsagar Nagnath Dattatray	Shiv Sena	68833	34.11%	21699	10.75%	940	0.47%
197	Nandgaon	190142	Suhas Dwarkanath Kande	Shiv Sena	85275	44.85%	Pankaj Bhujbal	Nationalist Congress Party	71386	37.54%	13889	7.30%	1264	0.66%
198	Pathri	236330	WARPUDKAR SURESH AMBADASRAO	Indian National Congress	105625	44.69%	PHAD MOHAN MADHAVRAO	Bharatiya Janata Party	90851	38.44%	14774	6.25%	1696	0.72%

S.No.	Constituency	Total Valid Votes in The Constituency	MLA	Party	Votes polled for Winner	% of Vote Share of Winner	Runners up	Party	Votes Polled for Runners up	Vote Share % Runners up	Margin of Victory	Margin of Victory %	Votes Polled for NOTA	Votes Polled for NOTA %
199	Kurla	123434	Mangesh Kudalkar	Shiv Sena	55049	44.60%	Milind (Anna) Bhupal Kamble	Nationalist Congress Party	34036	27.57%	21013	17.02%	4521	3.66%
200	Kalwan	194994	NITIN ARJUN (A.T.) PAWAR	Nationalist Congress Party	86877	44.55%	COM. GAVIT JIVA PANDU	Communist Party of India (Marxist)	80281	41.17%	6596	3.38%	2048	1.05%
201	Shirala	229278	Mansing Fattesingrao Naik	Nationalist Congress Party	101933	44.46%	Naik Shivajirao Yashwantrao	Bharatiya Janata Party	76002	33.15%	25931	11.31%	1417	0.62%
202	Umarkhed	196716	Namdev Jayram Sasane	Bharatiya Janata Party	87337	44.40%	Khadse Vijayrao Yadavrao	Indian National Congress	78050	39.68%	9287	4.72%	1497	0.76%
203	Nagpur North	195771	DR. NITIN RAUT	Indian National Congress	86821	44.35%	DR. MILIND MANE	Bharatiya Janata Party	66127	33.78%	20694	10.57%	1986	1.01%
204	Kagal	263636	Mushrif Hasan Miyalal	Nationalist Congress Party	116436	44.17%	Ghatge Samarjeetsinh Vikramsinh	Independent	88303	33.49%	28133	10.67%	1163	0.44%
205	Karad South	210224	CHAVAN PRITHVIRAJ DAJISAHEB	Indian National Congress	92296	43.90%	DR.ATULBABA SURESH BHOSALE	Bharatiya Janata Party	83166	39.56%	9130	4.34%	584	0.28%

S.No.	Constituency	Total Valid Votes in The Constituency	MLA	Party	Votes polled for Winner	% of Vote Share of Winner	Runners up	Party	Votes Polled for Runners up	Vote Share % Runners up	Margin of Victory	Margin of Victory %	Votes Polled for NOTA	Votes Polled for NOTA %
206	Teosa	173676	Adv. Yashomati Chandrakant Thakur	Indian National Congress	76218	43.89%	Rajesh Shriram Wankhade	Shiv Sena	65857	37.92%	10361	5.97%	1131	0.65%
207	Achalpur	185161	Bachchu Babarao Kadu	Prahar Janshakti Party	81252	43.88%	ANIRUDDHA ALIAS BABLUBHAU SUBHANRAO DESHMUKH	Indian National Congress	72856	39.35%	8396	4.53%	1496	0.81%
208	Khed alandi	220745	DILIP DATTATRAY MOHITE	Nationalist Congress Party	96866	43.88%	Suresh Namdeo Gore	Shiv Sena	63624	28.82%	33242	15.06%	1707	0.77%
209	Shivajinagar	134070	Siddharth Anil Shirole	Bharatiya Janata Party	58727	43.80%	Datta Bahirat	Indian National Congress	53603	39.98%	5124	3.82%	2390	1.78%
210	Chandivali	196341	Dilip Bhausahab Lande	Shiv Sena	85879	43.74%	Khan Mohd.Arif (Naseem)	Indian National Congress	85470	43.53%	409	0.21%	3360	1.71%
211	Nagpur South	193366	MOHAN GOPALRAO MATE	Bharatiya Janata Party	84339	43.62%	GIRISH KRUSHNARAO PANDAV	Indian National Congress	80326	41.54%	4013	2.08%	2353	1.22%

S.No.	Constituency	Total Valid Votes in The Constituency	MLA	Party	Votes polled for Winner	% of Vote Share of Winner	Runners up	Party	Votes Polled for Runners up	Vote Share % Runners up	Margin of Victory	Margin of Victory %	Votes Polled for NOTA	Votes Polled for NOTA %
212	Dahanu	165981	Nikole Vinod Bhiva	Communist Party of India (Marxist)	72114	43.45%	Dhanare Paskal Janya	Bharatiya Janata Party	67407	40.61%	4707	2.84%	4824	2.91%
213	Bhandara	234148	NARENDRA BHOJRAJ BHONDEKAR	Independent	101717	43.44%	ARVIND MANOHAR BHALADHARE	Bharatiya Janata Party	78040	33.33%	23677	10.11%	2494	1.07%
214	Tuljapur	228648	Ranajagjitsinha Padmasinha Patil	Bharatiya Janata Party	99034	43.31%	Chavan Madhukarrao Deorao	Indian National Congress	75865	33.18%	23169	10.13%	960	0.42%
215	DHAMANGAON RAILWAY	209820	ADSAD PRATAP ARUNBHAU	Bharatiya Janata Party	90832	43.29%	JAGTAP VIRENDRA WALMIKRAO	Indian National Congress	81313	38.75%	9519	4.54%	788	0.38%
216	Kopargaon	202540	Aashutosh Ashokrao Kale	Nationalist Congress Party	87566	43.23%	Kolhe Snehalata Bipindada	Bharatiya Janata Party	86744	42.83%	822	0.41%	1622	0.80%
217	AAKOLA WEST	169456	Govardhan Mangilal Sharma @ Lalaji	Bharatiya Janata Party	73262	43.23%	Sajid Khan Mannan Khan	Indian National Congress	70669	41.70%	2593	1.53%	2617	1.54%
218	Deoli	175033	Ranjit Prataprao Kamble	Indian National Congress	75345	43.05%	Rajesh Bakane	Independent	39541	22.59%	35804	20.46%	1002	0.57%

S.No.	Constituency	Total Valid Votes in The Constituency	MLA	Party	Votes polled for Winner	% of Vote Share of Winner	Runners up	Party	Votes Polled for Runners up	Vote Share % Runners up	Margin of Victory	Margin of Victory %	Votes Polled for NOTA	Votes Polled for NOTA %
219	Ballarpur	200460	Mungantiwar Sudhir Sachchidanand	Bharatiya Janata Party	86002	42.90%	Dr. Vishwas Anandrao Zade	Indian National Congress	52762	26.32%	33240	16.58%	1853	0.92%
220	Radhanagari	247034	Abitkar Prakash Anandrao	Shiv Sena	105881	42.86%	K. P. Patil	Nationalist Congress Party	87451	35.40%	18430	7.46%	1656	0.67%
221	Andheri East	147117	Ramesh Latke	Shiv Sena	62773	42.67%	Murji Patel (Kaka)	Independent	45808	31.14%	16965	11.53%	4311	2.93%
222	Barshi	224316	Rajendra Vitthal Raut	Independent	95482	42.57%	Adv. Dilip Gangadhar Sopal	Shiv Sena	92406	41.19%	3076	1.37%	1255	0.56%
223	Bhiwandi West	138866	Chaugule Mahesh Prabhakar	Bharatiya Janata Party	58857	42.38%	Khalid (Guddu)	Independent	43945	31.65%	14912	10.74%	1886	1.36%
224	Aurangabad central	194520	Jaiswal Pradeep Shivnarayan	Shiv Sena	82217	42.27%	Naserruddin Taquiuddin Siddioqui	All India Majlis-E-Ittehadul Muslimeen	68325	35.12%	13892	7.14%	1365	0.70%
225	Sion koliwada	129851	Captain R Tamil Selvan	Bharatiya Janata Party	54845	42.24%	Ganesh Kumar Yadav	Indian National Congress	40894	31.49%	13951	10.74%	3259	2.51%
226	Aurangabad West	199527	Sanjay Pandurang Shirsat	Shiv Sena	83792	42.00%	Raju Ramrao Shinde	Independent	43347	21.72%	40445	20.27%	3187	1.60%

S.No.	Constituency	Total Valid Votes in The Constituency	MLA	Party	Votes polled for Winner	% of Vote Share of Winner	Runners up	Party	Votes Polled for Runners up	Vote Share % Runners up	Margin of Victory	Margin of Victory %	Votes Polled for NOTA	Votes Polled for NOTA %
227	Chimur	207796	Bunty Bhangdiya	Bharatiya Janata Party	87146	41.94%	Satish Manohar Warjekar	Indian National Congress	77394	37.25%	9752	4.69%	1835	0.88%
228	Sakoli	228700	NANABHAU FALGUNRAO PATOLE	Indian National Congress	95208	41.63%	Dr. PARINAY RAMESH FUKRE	Bharatiya Janata Party	88968	38.90%	6240	2.73%	1543	0.67%
229	Armori	181271	Gajbe Krushna Damaji	Bharatiya Janata Party	75077	41.42%	Anandrao Gangaram Gedam	Indian National Congress	53410	29.46%	21667	11.95%	3650	2.01%
230	Akkalkuwa	200628	ADV. K. C. PADAVI	Indian National Congress	82770	41.26%	AAMSHYA FULJI PADAVI	Shiv Sena	80674	40.21%	2096	1.04%	4857	2.42%
231	Pune cantonment	126574	Kamble Sunil Dnyandev	Bharatiya Janata Party	52160	41.21%	Bagwe Ramesh Anandrao	Indian National Congress	47148	37.25%	5012	3.96%	2388	1.89%
232	ARJUNI MORGAON	176274	Chandrikapure Manohar Gowardhan	Nationalist Congress Party	72400	41.07%	Badole Rajkumar Sudam	Bharatiya Janata Party	71682	40.67%	718	0.41%	2045	1.16%
233	Byculla	124723	Yamini Yashwant Jadhav	Shiv Sena	51180	41.03%	Waris Yusuf Pathan	All India Majlis-E-Ittehadul Muslimeen	31157	24.98%	20023	16.05%	2791	2.24%

S.No.	Constituency	Total Valid Votes in The Constituency	MLA	Party	Votes polled for Winner	% of Vote Share of Winner	Runners up	Party	Votes Polled for Runners up	Vote Share % Runners up	Margin of Victory	Margin of Victory %	Votes Polled for NOTA	Votes Polled for NOTA %
234	SINDHKHED RAJA	201315	DR. RAJENDRA BHASKARRAO SHINGANE	Nationalist Congress Party	81701	40.58%	Khedekar Dr.Shashikant Narsingrao	Shiv Sena	72763	36.14%	8938	4.44%	1616	0.80%
235	Tumsar	215010	Karemore Raju Manikrao	Nationalist Congress Party	87190	40.55%	Charan Sovinda Waghmare	Independent	79490	36.97%	7700	3.58%	1910	0.89%
236	Osmanabad	216418	Kailas Balasaheb Ghadge Patil	Shiv Sena	87488	40.43%	Sanjay Prakash Nimbalkar	Nationalist Congress Party	74021	34.20%	13467	6.22%	1907	0.88%
237	Man	227786	JAYKUMAR BHAGWANRAO GORE	Bharatiya Janata Party	91469	40.16%	PRABHAKAR KRUSHNAJI DESHMUKH	Independent	88426	38.82%	3043	1.34%	1525	0.67%
238	Chembur	132654	Prakash Vaikunth Phaterpekar	Shiv Sena	53264	40.15%	Chandrakant Damodar Handore	Indian National Congress	34246	25.82%	19018	14.34%	3578	2.70%
239	Kalyan East	151062	Ganpat Kalu Gaikwad	Bharatiya Janata Party	60332	39.94%	Dhananjay Baburao Bodare Alias Aaba	Independent	48075	31.82%	12257	8.11%	3690	2.44%

S.No.	Constituency	Total Valid Votes in The Constituency	MLA	Party	Votes polled for Winner	% of Vote Share of Winner	Runners up	Party	Votes Polled for Runners up	Vote Share % Runners up	Margin of Victory	Margin of Victory %	Votes Polled for NOTA	Votes Polled for NOTA %
240	Ulhasnagar	109601	Ailani Kumar Uttamchand	Bharatiya Janata Party	43666	39.84%	Jyoti Pappu Kalani	Nationalist Congress Party	41662	38.01%	2004	1.83%	4978	4.54%
241	Chalisgaon	217953	Mangesh Ramesh Chavan	Bharatiya Janata Party	86515	39.69%	Deshmukh Rajiv Anil	Nationalist Congress Party	82228	37.73%	4287	1.97%	1677	0.77%
242	AHMEDPUR	214981	BABASAHEB MOHANRAO PATIL	Nationalist Congress Party	84636	39.37%	JADHAV PATIL VINAYAKRAO KISHANRAO	Bharatiya Janata Party	55445	25.79%	29191	13.58%	1762	0.82%
243	Karanja	186342	PATNI RAJENDRA SUKHANAND	Bharatiya Janata Party	73205	39.29%	DAHAKA PRAKASH UTTAMRAO	Nationalist Congress Party	50481	27.09%	22724	12.19%	1142	0.61%
244	Chopda	199418	Latabai Chandrakant Sonawane	Shiv Sena	78137	39.18%	Jagdishchandra Ramesh Valvi	Nationalist Congress Party	57608	28.89%	20529	10.29%	2175	1.09%
245	Paithan	213269	Bhumare Sandipanrao Asaram	Shiv Sena	83403	39.11%	Dattatray Radhakisan Gorde	Nationalist Congress Party	69264	32.48%	14139	6.63%	1998	0.94%
246	Kalamnuri	211354	Bangar Santosh Laxmanrao	Shiv Sena	82515	39.04%	Ajit Magar	Vanchit Bahujan Aaghadi	66137	31.29%	16378	7.75%	1247	0.59%

S.No.	Constituency	Total Valid Votes in The Constituency	MLA	Party	Votes polled for Winner	% of Vote Share of Winner	Runners up	Party	Votes Polled for Runners up	Vote Share % Runners up	Margin of Victory	Margin of Victory %	Votes Polled for NOTA	Votes Polled for NOTA %
247	Hadapsar	238169	Chetan Vitthal Tupe	Nationalist Congress Party	92326	38.76%	Yogesh Kundalik Tilekar	Bharatiya Janata Party	89506	37.58%	2820	1.18%	2474	1.04%
248	Arni	211294	DR. DHURVE SANDEEP PRABHAKAR	Bharatiya Janata Party	81599	38.62%	SHIVAJIRAO SHIVRAMJI MOGHE	Indian National Congress	78446	37.13%	3153	1.49%	2411	1.14%
249	Shirol	234098	Rajendra Shamgonda Patil (Yadravkar)	Independent	90038	38.46%	Ulhas Sambhaji Patil	Shiv Sena	62214	26.58%	27824	11.89%	1287	0.55%
250	Raver	203396	Chaudhari Shirish Madhukarrao	Indian National Congress	77941	38.32%	Haribhau Madhav Jawale	Bharatiya Janata Party	62332	30.65%	15609	7.67%	1946	0.96%
251	Georai	261554	Laxman Madhavrao Pawar	Bharatiya Janata Party	99625	38.09%	Vijaysingh Shivajirao Pandit	Nationalist Congress Party	92833	35.49%	6792	2.60%	478	0.18%
252	Hadgaon	195799	Jawalgaonkar Madhavrao Nivruttirao Patil	Indian National Congress	74325	37.96%	Kadam Sambharao Urf Baburao Kohalikar	Independent	60962	31.13%	13363	6.82%	682	0.35%

S.No.	Constituency	Total Valid Votes in The Constituency	MLA	Party	Votes polled for Winner	% of Vote Share of Winner	Runners up	Party	Votes Polled for Runners up	Vote Share % Runners up	Margin of Victory	Margin of Victory %	Votes Polled for NOTA	Votes Polled for NOTA %
253	Buldhana	179198	SANJAY RAMBHAU GAIKWAD	Shiv Sena	67785	37.83%	VIJAY HARIBHAU SHINDE	Vanchit Bahujan Aaghadi	41710	23.28%	26075	14.55%	1088	0.61%
254	MEERA BHAYANDAR	211636	Geeta Bharat Jain	Independent	79575	37.60%	Narendra Mehta	Bharatiya Janata Party	64049	30.26%	15526	7.34%	2623	1.24%
255	Pachora	201417	Kishor Appa Patil	Shiv Sena	75699	37.58%	Amol Panditrao Shinde	Independent	73615	36.55%	2084	1.03%	1724	0.86%
256	Pandharpur	239558	Bhalake Bharat Tukaram	Nationalist Congress Party	89787	37.48%	Paricharak Sudhakar Ramchandra	Bharatiya Janata Party	76426	31.90%	13361	5.58%	639	0.27%
257	Yavatmal	215717	MADAN MADHUKAR YERAWAR	Bharatiya Janata Party	80425	37.28%	ANIL ALIAS BALASAHEB SHANKARRAO MANGULKAR	Indian National Congress	78172	36.24%	2253	1.04%	1785	0.83%
258	Junnar	202529	Atul Vallabh Benke	Nationalist Congress Party	74958	37.01%	Sharaddada Bhimaji Sonawane	Shiv Sena	65890	32.53%	9068	4.48%	1492	0.74%
259	Boisar	212852	Rajesh Raghunath Patil	Bahujan Vikas Aaghadi	78703	36.98%	Tare Vilas Sukur	Shiv Sena	75951	35.68%	2752	1.29%	4622	2.17%

S.No.	Constituency	Total Valid Votes in The Constituency	MLA	Party	Votes polled for Winner	% of Vote Share of Winner	Runners up	Party	Votes Polled for Runners up	Vote Share % Runners up	Margin of Victory	Margin of Victory %	Votes Polled for NOTA	Votes Polled for NOTA %
260	Kannad	215750	UDAYSING SARDARSING RAJPUT	Shiv Sena	79225	36.72%	JADHAV HARSHAWARDHAN RAIBHANJI	Independent	60535	28.06%	18690	8.66%	2167	1.00%
261	Karmala	215071	Sanjaymama Vitthalrao Shinde	Independent	78822	36.65%	Narayan (Aaba) Govindrao Patil	Independent	73328	34.09%	5494	2.55%	1597	0.74%
262	Sakri	208098	Manjula Tulshiram Gavit	Independent	76166	36.60%	Mohan Gokul Suryawanshi	Bharatiya Janata Party	68901	33.11%	7265	3.49%	4147	1.99%
263	Ramtek	184531	Ashish Nandkishor Jaiswal (Vakil)	Independent	67419	36.54%	Dwaram Mallikarjun Reddy	Bharatiya Janata Party	43006	23.31%	24413	13.23%	1617	0.88%
264	Kalina	118581	SANJAY GOVIND POTNIS	Shiv Sena	43319	36.53%	GEORGE ABRAHAM	Indian National Congress	38388	32.37%	4931	4.16%	3012	2.54%
265	Aheri	166358	Aatram Dharamraobaba Bhagwantrao	Nationalist Congress Party	60013	36.07%	Atram Ambrishrao Raje Satyavanrao	Bharatiya Janata Party	44555	26.78%	15458	9.29%	5765	3.47%
266	Nashik West	218939	Seema Mahesh Hiray (Seematai)	Bharatiya Janata Party	78041	35.65%	Dr. Apoorva Prashant Hiray	Nationalist Congress Party	68295	31.19%	9746	4.45%	2118	0.97%

S.No.	Constituency	Total Valid Votes in The Constituency	MLA	Party	Votes polled for Winner	% of Vote Share of Winner	Runners up	Party	Votes Polled for Runners up	Vote Share % Runners up	Margin of Victory	Margin of Victory %	Votes Polled for NOTA	Votes Polled for NOTA %
267	Balapur	195443	Nitinkumar Bhikanrao Tale	Shiv Sena	69343	35.48%	Dr. Dhairyavardhan Haribhau Pundkar	Vanchit Bahujan Aaghadi	50555	25.87%	18788	9.61%	1753	0.90%
268	Bhiwandi East	129271	Rais Kasam Shaikh	Samajwadi Party	45537	35.23%	Rupesh Laxman Mhatre	Shiv Sena	44223	34.21%	1314	1.02%	1358	1.05%
269	Basmath	217733	Chandrakant Alias Rajubhaiyya Ramakant Nawghare	Nationalist Congress Party	75321	34.59%	Adv. Shivaji Munjajirao Jadhav	Independent	67070	30.80%	8251	3.79%	1957	0.90%
270	Kalyan West	189790	VISHWANATH ATMARAM BHOIR	Shiv Sena	65486	34.50%	NARENDRA BABURAO PAWAR	Independent	43209	22.77%	22277	11.74%	3542	1.87%
271	Warora	185623	Dhanorkar Pratibha Suresh	Indian National Congress	63862	34.40%	Sanjay Wamanrao Deotale	Shiv Sena	53665	28.91%	10197	5.49%	2224	1.20%
272	Nawapur	217663	Naik Shirishkumar Surupsing	Indian National Congress	74652	34.30%	Sharad Krushnarao Gavitt	Independent	63317	29.09%	11335	5.21%	4950	2.27%
273	Uran	218947	Maresh Baldi	Independent	74549	34.05%	Manohar Gajanan Bhoir	Shiv Sena	68839	31.44%	5710	2.61%	3077	1.41%

S.No.	Constituency	Total Valid Votes in The Constituency	MLA	Party	Votes polled for Winner	% of Vote Share of Winner	Runners up	Party	Votes Polled for Runners up	Vote Share % Runners up	Margin of Victory	Margin of Victory %	Votes Polled for NOTA	Votes Polled for NOTA %
274	Risod	205417	Amit Subhashrao Zanak	Indian National Congress	69875	34.02%	Anantrao Vitthalrao Deshmukh	Independent	67734	32.97%	2141	1.04%	1534	0.75%
275	VARSOVA	120820	DR. BHARATI LAVEKAR	Bharatiya Janata Party	41057	33.98%	BALDEV KHOSA	Indian National Congress	35871	29.69%	5186	4.29%	2294	1.90%
276	Murtizapur	175469	Harish Marotiappa Pimpale	Bharatiya Janata Party	59527	33.92%	Awachar Pratibha Prabhakar	Vanchit Bahujan Aaghadi	57617	32.84%	1910	1.09%	1225	0.70%
277	Nanded North	189501	Balaji Devidasrao Kalyankar	Shiv Sena	62884	33.18%	D. P. Savant	Indian National Congress	50778	26.80%	12106	6.39%	940	0.50%
278	Wani	209105	SANJIVREDDY BAPURAO BODKURWAR	Bharatiya Janata Party	67710	32.38%	WAMANRAO BAPURAO KASAWAR	Indian National Congress	39915	19.09%	27795	13.29%	1249	0.60%
279	Washim	206733	Lakhan Sahadeo Malik	Bharatiya Janata Party	66159	32.00%	Siddharth Akaramji Deole	Vanchit Bahujan Aaghadi	52464	25.38%	13695	6.62%	1491	0.72%
280	Hatkanangle	233502	Awale Raju (Baba) Jaywantrao	Indian National Congress	73720	31.57%	Dr. Sujit Vasantrao Minachekar	Shiv Sena	66950	28.67%	6770	2.90%	2367	1.01%

S.No.	Constituency	Total Valid Votes in The Constituency	MLA	Party	Votes polled for Winner	% of Vote Share of Winner	Runners up	Party	Votes Polled for Runners up	Vote Share % Runners up	Margin of Victory	Margin of Victory %	Votes Polled for NOTA	Votes Polled for NOTA %
281	Solapur City central	168221	Shinde Praniti Sushilkumar	Indian National Congress	51440	30.58%	Haji Farooq Maqbool Shabdi	All India Majlis-E-Ittehadul Muslimeen	38721	23.02%	12719	7.56%	807	0.48%
282	Vandre East	126597	ZEESHAN BABA SIDDIQUE	Indian National Congress	38337	30.28%	PRIN. VISHWANATH PANDURANG MAHADESHWAR	Shiv Sena	32547	25.71%	5790	4.57%	2548	2.01%
283	Gangakhed	269918	RATNAKAR MANIKRAO GUTTE	Rashtriya Samaj Paksha	81169	30.07%	VISHAL VIJAYKUMAR KADAM	Shiv Sena	63111	23.38%	18058	6.69%	1601	0.59%
284	Dhule City	161342	Shah Faruk Anwar	All India Majlis-E-Ittehadul Muslimeen	46679	28.93%	Rajwardhan Raghujirao Kadambande (Rajubaba)	Independent	43372	26.88%	3307	2.05%	1371	0.85%
285	Rajura	224857	SUBHASH RAMCHANDRARAO DHOTE	Indian National Congress	60228	26.79%	ADV. WAMAN SADASHIVRAO CHATAP	Swatantra Bharat Paksha	57727	25.67%	2501	1.11%	1563	0.70%

S.No.	Constituency	Total Valid Votes in The Constituency	MLA	Party	Votes polled for Winner	% of Vote Share of Winner	Runners up	Party	Votes Polled for Runners up	Vote Share % Runners up	Margin of Victory	Margin of Victory %	Votes Polled for NOTA	Votes Polled for NOTA %
286	Akot	182915	Prakash Gunwantrao Bharsakale	Bharatiya Janata Party	48586	26.56%	Adv. Santosh Vasant Rahate	Vanchit Bahujan Aaghadi	41326	22.59%	7260	3.97%	857	0.47%
287	Nanded South	182816	Mohanrao Marotrao Hambarde	Indian National Congress	46943	25.68%	Deelip Venkatrao Kandkurte	Independent	43351	23.71%	3592	1.96%	788	0.43%
288	Chandgad	220547	Rajesh Narasingrao Patil	Nationalist Congress Party	55558	25.19%	Shivaji Shattupa Patil	Independent	51173	23.20%	4385	1.99%	1793	0.81%

Table: Vote Share and Margin of Victory of MLAs in Maharashtra Assembly Elections



To Get Information About Candidates/Parties/MPs/MLAs/
Corporators/PILs in courts



Give us missed call on: **08010445555**

Toll Free Helpline No: **1800-110-440**

Journalist Helpline no: **8010394248**

Subscribe to ADR on **WhatsApp**
for updates: **7840067840**

Visit: **www.myneta.info**

Email: **adr@adrindia.org**

Send SMS: **Myneta <pincode or constituency>**
to 56070 or 9212356070

To contact ADR State Partners, visit:
<https://adrindia.org/about-adr/state-coordinators>

Social Media

 /myneta.info  /adrindia.org  @adrspeaks  /adrspeaks  /adrspeaks
 <https://in.linkedin.com/company/association-of-democratic-reforms-adr->

Our Websites

www.adrindia.org
Provides detailed analytical
reports of Lok Sabha, State
Assemblies, local body elections
& financial reports of political
parties & ongoing PILs in courts

www.myneta.info
Provides full information of criminal
cases, asset, liability and education
details declared by candidates in the
self sworn affidavits

Android Apps

Myneta: The criminal, financial, educational & other background
information self declared by candidates in their affidavits during elections
is now available on your mobile phones.

Election Watch Reporter: This app provides a tool to the citizens to
capture violations of election related laws & the code of conduct.
Both the applications are available on Google Play Store.

Contact Details

Maharashtra Election Watch

Mr. Ajit Ranade Founder member, National Election Watch, Association for Democratic Reforms, +91-97022 15312 ajit.ranade@gmail.com	Mr. Sharad Kumar State Coordinator Maharashtra Election Watch +91 98694 03721 sharadkumar40@gmail.com	Mr. Satish Khot Pune Coordinator Maharashtra Election Watch +91 93712 21142 nsccpune@gmail.com
-----------------------------------------------------------------------------------------------------------------------------------------------------------------	-------------------------------------------------------------------------------------------------------------------------------------	------------------------------------------------------------------------------------------------------------------------------

National Election Watch/Association for Democratic Reforms

Media and Journalist Helpline +91 80103 94248 Email: adr@adrindia.org	Maj.Gen. Anil Verma (Retd) Head National Election Watch, Association for Democratic Reforms 011 4165 4200, +91 88264 79910 adr@adrindia.org, anilverma@adrindia.org	Prof Jagdeep Chhokar IIM Ahmedabad (Retd.) Founder Member, National Election Watch, Association for Democratic Reforms +91 99996 20944 jchhokar@gmail.com	Prof Trilochan Sastry IIM Bangalore Founder Member, National Election Watch, Association for Democratic Reforms +91 94483 53285 trilochans@iimb.ac.in
------------------------------------------------------------------------------------------------------------------------------	----------------------------------------------------------------------------------------------------------------------------------------------------------------------------------------------------------------------------------------------------	---------------------------------------------------------------------------------------------------------------------------------------------------------------------------------------------------------------------------------------------	-----------------------------------------------------------------------------------------------------------------------------------------------------------------------------------------------------------------------------------------